

MOTOR CONTROLLER



Ingenia
Servo Drives

Everest Series Servo Drives

High Power Density,
High Performance,
Ready-to-Use Servo Drives

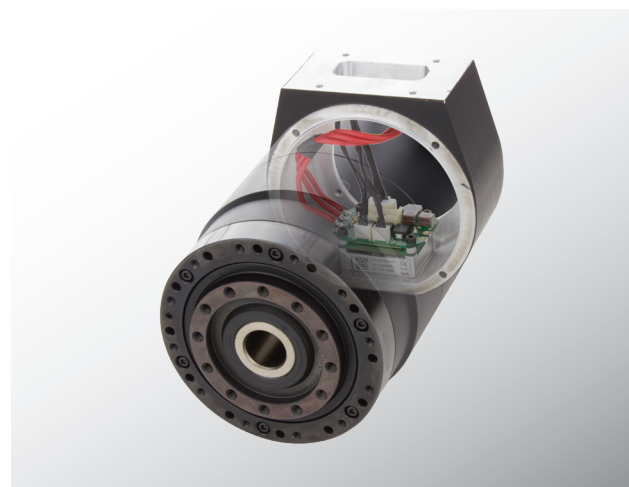
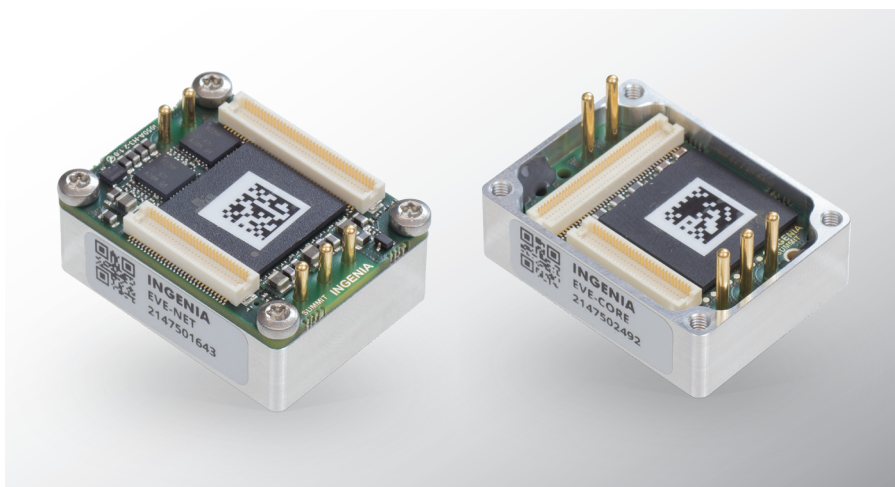
Decrease time-to-market with the Everest Series that delivers fast integration into robotic actuators.

› CELERAMOTION.COM



Everest Series Servo Drives

High Power Density, High Performance, Ready-to-Use Servo Drives



High Power Density and Compact Size.

The Everest Series is an ultra-compact, super smart, high-powered servo drive. It is the most versatile servo drive in its class. Built on a shielded body construction which provides best-in-class heat dissipation and ultra-low radiated emissions, packed with features for the most demanding applications. High-efficiency power stage reduces power losses and actuator temperature.

Its small size and rugged design enables it to be mounted virtually anywhere including robot joints, wearable robots, unmanned ground or aerial vehicles, as well as inside motors.

The Everest Series is not only a BLDC motor controller—it also features the most advanced transistor technology in the world. It delivers the highest power density and efficiency while keeping negligible EMI, providing linear amplifier performance.

Benefits

- Miniature size, great for robotic applications
- Dual (motor and load) loop support for unparalleled precision
- 16-bit high-resolution torque sensing
- Ultra-fast servo loops for smooth operation
- Ready-to-use connectors accelerate development time
- Highest power density smart servo drive, up to 60 A
- Wide voltage range for DC bus or battery operation, up to 72 V
- Low channel resistance for highest efficiency up to 98%
- Functional safety STO SIL3 Ple (TÜV certified)

Specifications	XCR	NET	CORE
Supply Voltage:	Power: 8 to 60 VDC* Logic: 8 to 50 VDC (optional)	Power: 8 to 60 VDC* Logic: 8 to 50 VDC	Power: 8 to 60 VDC* Logic: 8 to 50 VDC
Continuous Current:	45 A	45 A	45 A
Standby Power Consumption:	2.5 to 3.1 W	2.2 W	0.7 W
PWM Switching Frequency:	10, 20, 50, 100 kHz	10, 20, 50, 100 kHz	10, 20, 50, 100 kHz
Motor Type:	DC Brushed, Rotary Brushless	DC Brushed, Rotary Brushless	DC Brushed, Rotary Brushless
Feedback:	Digital Halls, Quadrature Incremental Encoder, BiSS-C, Dual BiSS-C Daisy-Chained, SSI	Digital Halls, Quadrature Incremental Encoder, BiSS-C, Dual BiSS-C Daisy-Chained, SSI	Digital Halls, Quadrature Incremental Encoder, BiSS-C, Dual BiSS-C Daisy-Chained, SSI
Communications:	EtherCAT, Ethernet, CANopen	EtherCAT, Ethernet, CANopen	SPI
Dimensions:	42 mm x 29 mm x 23.2 mm (includes mating connectors)	34.5 mm x 26 mm x 14.2 mm	34.5 mm x 26 mm x 10.4 mm
Weight:	38 g	24 g	18 g

*Higher voltage available. Specifications subject to change.



Ingenia
Servo Drives

Carrer d'Àvila 124, 2^oB | Barcelona, 08018 Spain
Tel.: +34.932.917.682 | innovation@celeramotion.com | celeramotion.com