



Hangyu Power System (Shanghai) Co., Ltd.

HY-SCSSU Series

Programmable Switching AC Constant Current Source

Military Quality Power Supply Expert



HY-SCSSU Series Programmable Switching AC Constant Current Source

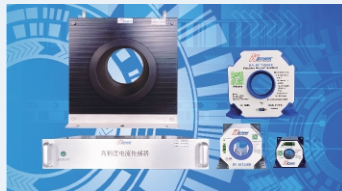
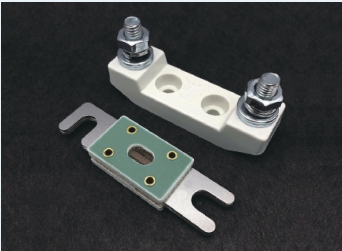


High Power,High Precision,High Reliability



Application Field

- Current sensor
- Current transformer
- Cable line
- Wire harness
- Connector
- Circuit breaker
- Contactor
- Low voltage appliance



Product Features

- Output frequency range 45Hz-70Hz
- Output Capacity Optional range 1kVA-300kVA
- Output current range 1-12000A
- Open circuit voltage 2V/5V/10V/20V, optional 2-300V
- Support front panel programming, without upper computer software control
- The voltage rise and fall slopes are adjustable
- Power output soft start function
- 16-bit D/A high precision converter for accurate output
- 16-bit A/D high precision converter, more accurate read back
- Multiple protection functions OVP, OCP, and OTP
- 19 inch standard rack size or floor type cabinet
- 7-inch ultra large LCD display screen
- Touch screen operation & digital key input
- Multi-stage adjustment knob
- The power input is controlled by circuit breaker, which is more secure
- Output the ON/OFF button
- Fan intelligent speed control design, reduce noise
- Front/side air in, rear air out, saving heat dissipation space
- Support modbus protocol
- Standard interface: RS-485&RS-232
- Choose buy interface: LAN&CAN

GPIB

Analog quantity programming and monitoring

(Isolation type)

SCSSU

01

HY-SCSSU Series Product Selection Table

Product Model Naming Rules (Single-Phase)				Product Model Naming Rules (Three-Phase)			
Product Series	Open Circuit Voltage		Output Current	Product Series	Three Phase Output	Open-Circuit Voltage	Output Current
HY-SCSSU	10	-	100	HY-SCSSU	3P	10	100
Series name	Open circuit voltage 10V		The output current 1A-100A	Series name	Three-phase output	Open circuit voltage 10V	The output current 1A-100A
Selection examples: Product model: HY-SCSSU 10-100 Open circuit voltage 10V, output current 1A-100A				Selection examples: Product model: HY-SCSSU 3P-10-100 Three-phase output, open circuit voltage 10V, output current 1A-100A			

■ In the selection table, special specifications outside the voltage/frequency/output capacity range are accepted for customization

HY-SCSSU Series Programmable Switching AC Constant Current Source				
Product Model	Maximum Output Current (Arms)	Maximum Open Circuit Voltage (L-N,Vrms)	Output Capacity (Single Phase/Three Phase)	Output Frequency (Hz)
HY-SCSSU	100A	2.5V	1kVA	45Hz -70Hz
HY-SCSSU	150A		2kVA	
HY-SCSSU	200A		3kVA	
HY-SCSSU	250A		5kVA	
HY-SCSSU	300A	5V	10kVA	
HY-SCSSU	400A	10V	15kVA	
HY-SCSSU	600A	20V	20kVA	
HY-SCSSU	1000A	36V	25kVA	
HY-SCSSU	1200A	48V	30kVA	
HY-SCSSU	1500A	Multiple gears optional	40kVA	
HY-SCSSU	2000A		50kVA	
HY-SCSSU	2500A		60kVA	
HY-SCSSU	3000A		100kVA	
HY-SCSSU	5000A		120kVA	
HY-SCSSU	6000A		300kVA	
HY-SCSSU	10000A		Multiple gears optional	
HY-SCSSU	12000A			

*When the equipment runs continuously for more than 30 minutes at the specified operating temperature, all technical indicators can be guaranteed.

AC Output

Working mode	Constant current mode (CC Mode)
Output capacity	Optional range 1kVA-120kVA
Output current	Optional range 1-12000A
Output current range can be set	1%-100%
Open-circuit voltage	2.5V/5V/10V/20V/36V/48V (customized according to customer requirements)
Output frequency	45Hz-70Hz
Frequency stabilization accuracy	100ppm
Output phase number	Single-phase/three-phase optional
Input adjustment rate	$\leq 0.5\%$ F.S. (Note: F.S. meaning full scale)
Waveform distortion (THD)	Sinusoidal wave, I-THD $\leq 3\%$, resistance test * According to 400Hz, test when the output voltage is more than 50% of the rated voltage
	Different current models have different distortion rates

SCSSU

03

Programming And Readback Accuracy & Resolution

Current output programming accuracy	1%F.S.
Current setting resolution	0.01A (≤ 600 A), 0.1A (> 600 A)
Frequency setting resolution	0.01Hz
Current output read back accuracy	1%F.S.
Current read back resolution	0.01A (≤ 600 A), 0.1A (> 600 A)

Protection Function

Open circuit protection	If the open circuit voltage limit is exceeded, the output is turned off immediately
Overttemperature protects OTP	If the limit is exceeded, the output is immediately turned off

HY-SCSSU Series Technical Parameter

Environmental Condition

Environment	Indoor use; Installation overvoltage class: II; Pollution level: P2; Class II equipment
Operating ambient temperature	0°C to 45°C
Storage ambient temperature	-20°C to 65°C
Working ambient humidity	20%-90%RH, no condensation, continuous operation
Storage environment humidity	10%-95%RH, no condensation
Altitude	Above 2000 meters above sea level, the power is reduced by 2% per 100 meters, or the maximum working ambient temperature is reduced by 1°C per 100 meters;When not in operation, it can reach an altitude of 12,000 meters
Cooling	Forced air cooling, intelligent speed control fan, both sides/front air, rear air
Noise	≤ 65dB(A), use 1m to weigh the measurement

Control Panel

Display	7 inches, LCD LCD display, touch screen
Display item	Current (set value & measured value), voltage measurement value, frequency (set value), working time, cumulative working time, current time and date
Control function	Digital key input, multi-stage adjustment knob(outer ring coarse adjustment/inner ring fine adjustment) Output ON/OFF switch, Lock keyboard and touch lock, Reset restart Status indicator (Shift/Local/Remote/Alarm/Lock/Output)
Programming function	Step/ladder/gradient

Communication Interface

Standard configuration	RS-485 & RS-232
Choose and buy	LAN, CAN, GPIB, Analog quantity programming and monitoring (Isolation type)

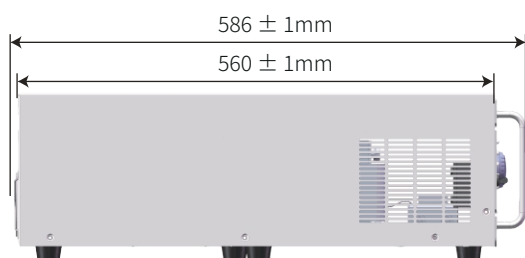
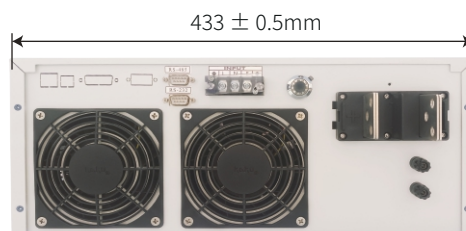
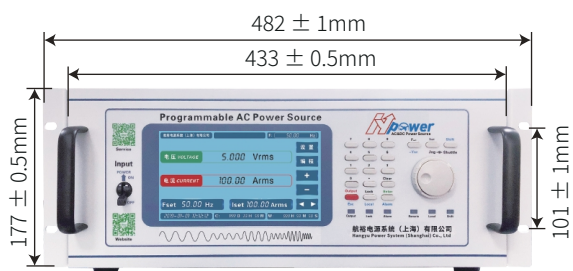
Appearance Color & Size

Colour	RAL 7035
Size	4U, standard 19-inch rack mount, or desktop (fixed foot mat); 10U, standard 19-inch rack type, or floor type (with movable universal casters and brakes); 18U and above, floor type cabinets, with movable universal casters and brakes.

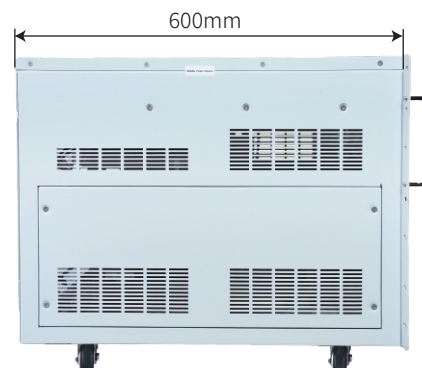
SCSSU

04

4U 433(W)*560(D)*177(H)mm



10U 440(W)*600(D)*445(H)mm



Size

05

Appearance & Size

18U 600(W)*800(D)*920(H)mm

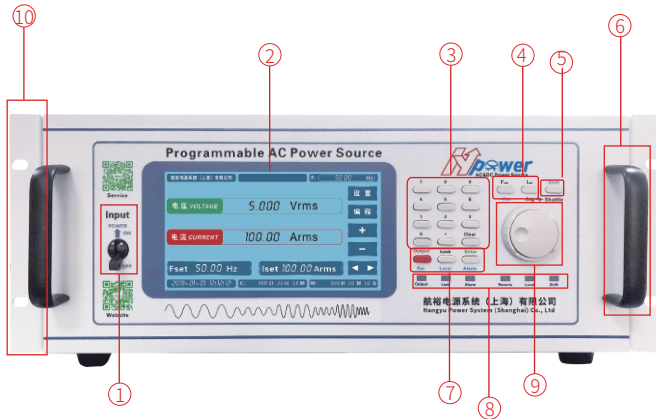


24U 600(W)*800(D)*1190(H)mm
30U 600(W)*800(D)*1453(H)mm
36U 600(W)*800(D)*1718(H)mm



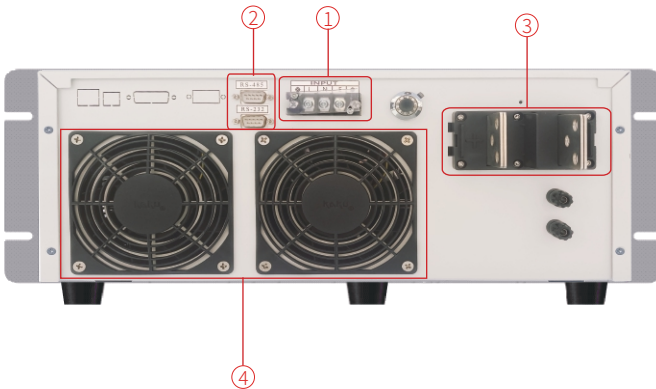
Display And Control Panel

Control Panel



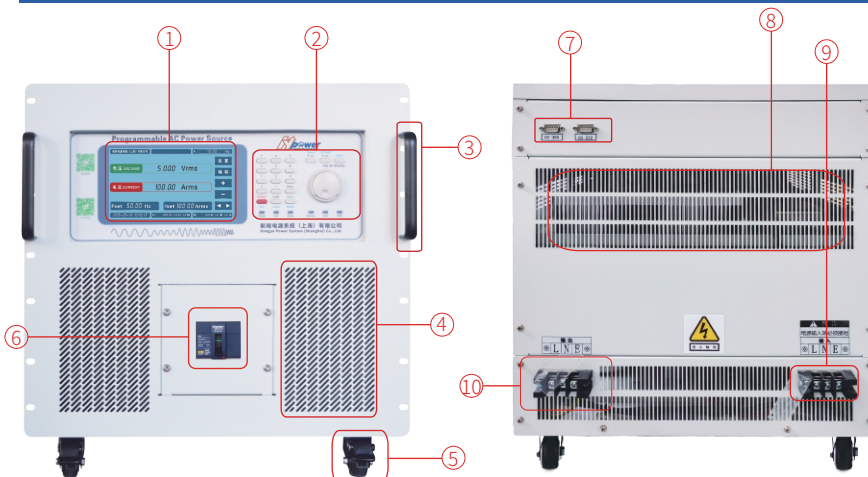
- ① Power input circuit breaker
- ② LCD display (7 inches, touch screen)
- ③ Numeric input keyboard
- ④ Frequency/current setting key
- ⑤ Shift function reuse key
- ⑥ Chassis handle
- ⑦ Lock、Enter、Esc、Local、Reset、Output ON/OFF
- ⑧ Status indicator light
- ⑨ Multi-stage adjustment knob (inner ring fine adjustment/outer ring coarse adjustment)
- ⑩ 19-inch standard rack mounting holes

Rear Panel



- ① AC output terminal
- ② RS-485 & RS-232 Communication interface
- ③ AC input terminal
- ④ Heat dissipation air outlet

Front Panel & Rear Panel



- ① LCD monitor (7 inches, touch screen)
- ② Control area
- ③ 19 inch standard rack handle
- ④ Heat dissipation air inlet
- ⑤ Caster wheel
- ⑥ Power input circuit breaker
- ⑦ Communication interface
- ⑧ Heat dissipation air outlet
- ⑨ AC input terminal
- ⑩ AC output terminal

Size

07



Official wechat:hypower-cn



Contact us

Hangyu Power System (Shanghai) Co., Ltd.

Mobile/Whatsapp:+8613801800699

Fax:+86-21-67285228-8009

Email:sales@hangyupower.com

neo@hangyupower.com

Address: Block B, Building 11, No. 1698 Minyi Road, Songjiang District, Shanghai

Web:www.hangyupower.com

©Hangyu Power System, 2024

HY-SCSSU Series Product Manual, Version 06.12, June 2025

All technical data and instructions are based on the actual product

If there is any change, Hangyu Power has the final interpretation right

Authorized distributor:

--