

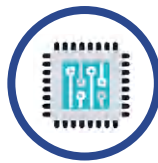


HY-PWHSU Series High Power Programmable Wide Range DC Power Supply

Excellent performance and powerful assembly



High Power



Wide Range



Widely Used

In the power range, the combination of various voltages and currents can be output at full power. A single power supply covers the application of 3 to 5 traditional power supplies, and three power supplies can cover 10 to 13 traditional power supplies, greatly reducing the complexity and space occupied by the power system.

Due to the above constant power characteristics, this power supply is mainly used in laboratories and automatic test systems to provide high-power, stable DC power supply.

Hangyu Power System (Shanghai) Co., LTD



Official wechat:hypower-cn

Mobile/Whatsapp: +8613801800699

Fax: +86-21-67285228-8009

Email:sales@hangyupower.com

neo@hangyupower.com

Address: Building B, 11th Floor, No. 1698 Minyi Road, Songjiang District,
Shanghai.PRChina

website:www.hangyupower.com

©Hangyu Power System, 2024

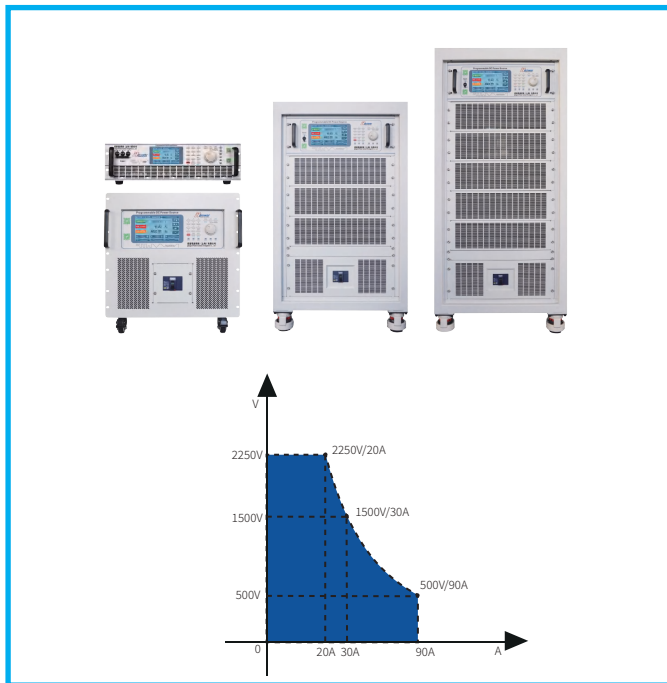
HY-PWHSU series product color page, 01.00 edition, May 2024

All technical data and instructions are based on the actual product

If there is any change, Hangyu Power has the final interpretation right

P 产品介绍

RODUCT INTRODUCTION



- ### Product Features
- High power density: 3U single machine can reach 18kW
 - Master-slave parallel can be extended to 2MW
 - Output voltage: 0-2250V
 - Output current: 0-8000A
 - Working mode: CC, CV, CP
 - Multiple protection functions (OVP, OCP, OPP, OTP)
 - Input standard PFC, power factor up to 0.99
 - 16 bits D/A High precision converter with precise output
 - 20 bits A/D High precision converter for more accurate read back

Application Area



This power supply is widely used in industry (motor), server power supply, high voltage UPS, aerospace, national defense and other fields, plays an important role.

- Server power supply, high voltage UPS, data center, inverter design and test
- Fuel cell, power battery, solar panel, super capacitor test
- Power supply environment simulation of vehicle, airborne and shipboard electronic equipment
- DC charger, charging pile design and test system integration
- Drones, lasers, sensors
- Automated Test System (ATE)
- Precision plating, sputtering, surface treatment

Product Model Naming Rules

Product Series	Output Voltage	Output Current	Optional Function
HY-PWHSU	1500	- 40	- CF

Selection examples:
Product Model: HY-PWHSU 1500-40-CF
Output voltage 0-1500V, output current 40A,
Choose user-defined features

Communication protocol	Standard communication interface	Optional communication interface
Modbus	RS-485	- CAN: indicates the CAN communication interface
SCPI	RS-232	- GPIB: indicates the GPIB communication interface
LAN	Digital I/O	- IA: analog programming and monitoring interface (isolated type)

Optional function
- HR : High resolution/precision
- ABD : anti-backflow module device
- BD : Prevents anti-module device from being connected
- TVS : Warm suppression module device
- T1 : Operating temperature -10°C to 50°C
- T2 : Operating temperature -20°C to 50°C
- T4 : Operating temperature -40°C to 50°C
- CF : User-defined functions (please specify when ordering)
- MR : Measurement report (issued by CNAS certified third party)

* All technical indicators can only be guaranteed when the equipment runs continuously for more than 30 minutes at the specified operating temperature.

P 产品选型

PRODUCT SELECTION

80V Series Power Supply Selection

Models	Output voltage	Output current	Output power
HY-PWHSU 80-1020	80V	1020A	30kW
HY-PWHSU 80-1530	80V	1530A	45kW
HY-PWHSU 80-2040	80V	2040A	60kW
HY-PWHSU 80-2550	80V	2550A	75kW

Models	Output voltage	Output current	Output power
HY-PWHSU 80-3060	80V	3060A	90kW
HY-PWHSU 80-3570	80V	3570A	105kW
HY-PWHSU 80-4080	80V	4080A	120kW

300V Series Power Supply Selection

Models	Output voltage	Output current	Output power
HY-PWHSU 300-75	300V	75A	6kW
HY-PWHSU 300-150	300V	150A	12kW
HY-PWHSU 300-225	300V	225A	18kW
HY-PWHSU 300-450	300V	450A	36kW
HY-PWHSU 300-675	300V	675A	54kW
HY-PWHSU 300-900	300V	900A	72kW
HY-PWHSU 300-1125	300V	1125A	90kW
HY-PWHSU 300-1350	300V	1350A	108kW
HY-PWHSU 300-1575	300V	1575A	126kW
HY-PWHSU 300-1800	300V	1800A	144kW

500V Series Power Supply Selection

Models	Output voltage	Output current	Output power
HY-PWHSU 500-40	500V	40A	6kW
HY-PWHSU 500-80	500V	80A	12kW
HY-PWHSU 500-120	500V	120A	18kW
HY-PWHSU 500-240	500V	240A	36kW
HY-PWHSU 500-360	500V	360A	54kW
HY-PWHSU 500-480	500V	480A	72kW
HY-PWHSU 500-600	500V	600A	90kW
HY-PWHSU 500-720	500V	720A	108kW
HY-PWHSU 500-840	500V	840A	126kW
HY-PWHSU 500-960	500V	960A	144kW

800V Series Power Supply Selection

Models	Output voltage	Output current	Output power
HY-PWHSU 800-25	800V	25A	6kW
HY-PWHSU 800-50	800V	50A	12kW
HY-PWHSU 800-75	800V	75A	18kW
HY-PWHSU 800-150	800V	150A	36kW
HY-PWHSU 800-225	800V	225A	54kW
HY-PWHSU 800-300	800V	300A	72kW
HY-PWHSU 800-375	800V	375A	90kW
HY-PWHSU 800-450	800V	450A	108kW
HY-PWHSU 800-525	800V	525A	126kW
HY-PWHSU 800-600	800V	600A	144kW

1000V Series Power Supply Selection

Models	Output voltage	Output current	Output power
HY-PWHSU 1000-54	1000V	54A	18kW
HY-PWHSU 1000-108	1000V	108A	36kW
HY-PWHSU 1000-162	1000V	162A	54kW
HY-PWHSU 1000-216	1000V	216A	72kW
HY-PWHSU 1000-270	1000V	270A	90kW
HY-PWHSU 1000-324	1000V	324A	108kW
HY-PWHSU 1000-378	1000V	378A	126kW
HY-PWHSU 1000-432	1000V	432A	144kW

1500V Series Power Supply Selection

Models	Output voltage	Output current	Output power
HY-PWHSU 1500-40	1500V	40A	18kW
HY-PWHSU 1500-80	1500V	80A	36kW
HY-PWHSU 1500-120	1500V	120A	54kW
HY-PWHSU 1500-160	1500V	160A	72kW
HY-PWHSU 1500-200	1500V	200A	90kW
HY-PWHSU 1500-240	1500V	240A	108kW
HY-PWHSU 1500-280	1500V	280A	126kW
HY-PWHSU 1500-320	1500V	320A	144kW

2250V Series Power Supply Selection

Models	Output voltage	Output current	Output power
HY-PWHSU 2250-25	2250V	25A	18kW
HY-PWHSU 2250-50	2250V	50A	36kW
HY-PWHSU 2250-75	2250V	75A	54kW
HY-PWHSU 2250-100	2250V	100A	72kW
HY-PWHSU 2250-125	2250V	125A	90kW
HY-PWHSU 2250-150	2250V	150A	108kW
HY-PWHSU 2250-175	2250V	175A	126kW
HY-PWHSU 2250-200	2250V	200A	144kW



技术参数

TECHNICAL PARAMETER

Technical Parameter

Programming And Readback Accuracy Resolution	
Voltage output programming accuracy	0.05% of the rated output voltage
Current output programming accuracy	0.1% of the output current + 0.01% of the rated output current (in constant current programming mode, the readback and monitoring accuracy do not include the influence of heating drift and load temperature change rate)
Voltage setting resolution	0.001V (≤ 60 V), 0.01V (≤ 600 V), 0.1V (> 600 V)
Current setting resolution	0.001A (≤ 60 A), 0.01A (≤ 600 A), 0.1A (> 600 A)
Voltage output readback accuracy	$\pm 0.05\%$ of rated output voltage + $\pm 0.05\%$ of actual voltage
Current output read back accuracy	0.1% of the output current + 0.01% of the rated output current (in constant current programming mode, the readback and monitoring accuracy do not include the influence of heating drift and load temperature change rate)
Voltage read back resolution	0.00001 V (≤ 10 V), 0.0001 V (≤ 100 V), 0.001 V (100 V $< U \leq 1000$ V), 0.01 V (> 1000 V)
Current read back resolution	0.00001 A (≤ 10 A), 0.0001 A (≤ 100 A), 0.001 A (100 A $< I \leq 1000$ A)
Stability And Temperature Coefficient	
Temperature drift	U:0.01% I:0.01% (After 30 minutes of power supply at a certain input voltage and load ambient temperature, 8 hours)
Temperature coefficient	U:50ppm/ $^{\circ}$ C I: 70ppm/ $^{\circ}$ C (30 minutes after power on)
Protection Function	
OVP Overvoltage protection setting range	10 - 110%, Immediate shutdown of output beyond limit
OCP Overcurrent protection setting range	0 - 105%, Immediate shutdown of output beyond limit
OTP Over temperature protection	Immediate shutdown of output beyond limit
OPP Over power protection	10 - 110%, Immediate shutdown of output beyond limit
Control Panel	
Monitor	4.7 inch LCD display, touch screen
Control function	Digital key input, multi-stage shuttle knob adjustment (outer ring coarse adjustment/inner ring fine adjustment), output ON/OFF switch, Lock keyboard and touch lock, Reset Restart status indicator (Shift/Local/Remote/Alarm/Lock/Output)
Environmental Condition	
Environment	Indoor use; Installation overvoltage level: II; Pollution level: P2; Class II equipment
Working environment temperature	0 $^{\circ}$ C to 50 $^{\circ}$ C, optional -10 $^{\circ}$ C to 50 $^{\circ}$ C, -20 $^{\circ}$ C to 50 $^{\circ}$ C, -40 $^{\circ}$ C to 50 $^{\circ}$ C
Storage environment temperature	-20 $^{\circ}$ C to 65 $^{\circ}$ C,
Working ambient humidity	20%-90% RH, No condensation, continuous operation
Storage environment humidity	10% - 95% RH, No condensation
Altitude	Above 2000 meters above sea level, every 100 meters up, the power will be reduced by 2%, or reduce the maximum working ambient temperature by 1 $^{\circ}$ C per 100 meters; When not in operation, the altitude can reach 12,000 meters
Cooldown	Forced air cooling, intelligent variable speed fan, front/side air inlet, rear air outlet
Noise	≤ 65 dB(A), Weighted measurement with 1 m
Input Power Supply	
Frequency	47 Hz - 63 Hz
Connection mode	Three-phase three-wire + ground wire, 380 V \pm 15%
Power factor (typical value)	0.94 (Three-phase input)
Size & Color	
Width * Depth * Height (W * D * H)	450(W) * 660(D) * 133(H) mm, 3U
Weight	35kg/3U
Color	RAL 7035