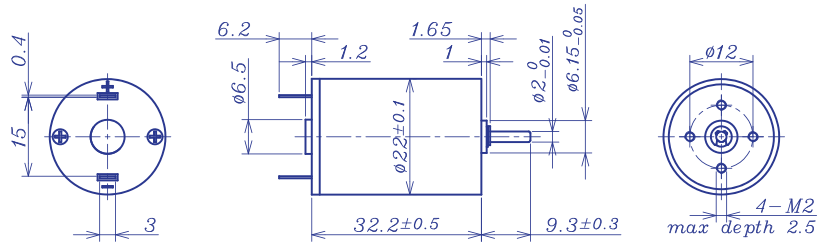


AM-CL2232MAN SERIES



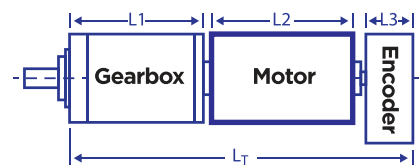
Motor Model		Precious metal brush				Ball bearings			
		0308	0305	0607	0605	1207	1205	2407	2406
Nominal voltage	V	3	3	6	6	12	12	24	24
No load speed	±12% rpm	7600	4500	6998	5006	6548	4986	7048	6167
No load current	Max 150% mA	55	30	27	14	10.2	7	6.5	8.5
Recommend limit for continuous operating	Max cont. torque	mN.m	3.2	5.2	5.9	7.2	6.8	7.8	7.1
	Rated speed	rpm	6998	3745	6083	3843	5448	3769	5901
	Rated current	mA	900	850	750	650	400	350	220
	Rated power	W	2.3	2.0	3.8	2.9	3.9	3.1	4.3
Starting current	mA	10714	4918	5556	2752	2330	1412	1319	1057
Stall torque	mN.m	40	31	45	31	40	32	42	39
Maximum power output	W	8.0	3.6	8.3	4.1	6.9	4.2	7.8	6.2
Maximum efficiency	%	86	85	87	86	87	86	86	83
Terminal resistance	±12% Ω	0.28	0.61	1.08	2.18	5.15	8.50	18.2	22.7
Inductance	(1KHZ) mH	0.015	0.037	0.68	0.14	0.32	0.54	1.1	1.38
Mechanical time constant	ms	11.4	9.2	9.8	9.9	9.8	9.5	9.6	9.3
Moment of inertia	gcm ²	5.75	6.02	6.02	5.88	5.75	5.82	5.55	5.55
Torque constant	mN.m/A	3.8	6.3	8.1	11.4	17.4	22.9	32.4	36.9
Speed constant	rpm/V	2546	1509	1172	839	548	418	295	259
Speed/torque gradient	rpm/mN.m	190.1	145.5	155.4	160.5	162.0	155.2	166.0	159.5
Weight	g	56.4	56.9	56.9	56.7	56.5	56.6	56.3	56.3

ADDITIONAL INFORMATION

Motor thermal resistance:	24.9K/W	Motor thermal time constant:	685 S
Axial (dynamic):	5.9 N	Radial (5mm from mounting face):	8.0 N
Press-fit force (static):	16(90)N	Max allowable screw depth into flange:	2.5 mm
Maximum radial play (5mm from mounting face):	≤0.02 mm	Axial play	Preset
Maximum winding temperature:	85°C	Ambient temperature range:	-30 to 65°C
Standard rear shaft diameter:	2 mm	Standard rear shaft length "L":	0/3.7 mm

Total Length (Gearbox and Motor): L _T =L ₁ +L ₂ +L ₃			
L1:20GP	L1: 24GP	L2:CL22	L3: EN22S
18.8	22.2	32.2	10.7
23.6	27.4		
28.4	32.6		

AM-CL2232MAN Combination Scheme



Recommended Gearbox:
Planetary Gearbox:
AM-20GP
AM-24GP

Recommended Encoder:
Encoder S: AM-EN2211S***
2~3 Channels

For more combination specs, visit Assun Motor website.

Remarks: Client can choose gearbox and encoder to match with this motor. Some combinations are listed here for reference.

Motor data tested at 25°C. Motor operation exceeding continuous limits will reduce life or result in damage.
At elevated ambient temperatures, load current must be reduced.

Download datasheet: <https://assunmotor.com/documents-download>

Visit Our Website and Online Shop at <https://assunmotor.com> Contact: info@assunmotor.com