

ASSUN

DRIVING THE FUTURE



TOTAL SOLUTION for Precision
DC Drive System 2020

DC BRUSHLESS MOTOR

HIGH POWER SERIES (155°C)

Assun high power series BLDC motors are designed with multi-pole (4 poles) structure. Together with the high power and high torque output, these motors have also been upgraded to cope with high winding temperatures up to 155 °C. Applications with heavy duty requirements now have the perfect choice to their best satisfaction.



AM-BL2453BF Series

		Brushless Motor			Ball Bearings			
Motor Model		1212	1209	1812	1809	2412	2409	
Nominal voltage	V	12	12	18	18	24	24	
No load speed	±12% rpm	11937	9182	11937	8952	11937	9182	
No load current	Max 150% mA	358	300	239	200	179	150	
Recommend limit for continuous operating	Max cont. torque	mN.m	46.48	51.17	54.16	53.76	46.48	56.16
	Rated Speed	rpm	10799	8037	10769	7818	10954	7979
	Rated Current	mA	5200	4400	4000	3000	2600	2400
	Rated Power	W	52.56	43.07	61.08	44.02	53.32	46.93
Starting current	mA	54545	35294	40909	23684	31579	18321	
Stall torque	mN.m	524	440	589	455	606	457	
Maximum power output	W	163.6	105.9	174.1	106.6	189.5	109.9	
Maximum Efficiency	%	84	82	85	82	86	83	
Terminal resistance ±12%	Ω	0.22	0.34	0.44	0.76	0.76	1.31	
Inductance (1KHz)	mH							
Mechanical time constant	ms	2.38	2.18	2.12	2.06	2.08	2.10	
Moment of inertia	gcm ²	9.97	9.97	9.97	9.97	9.97	9.97	
Torque constant	mN.m/A	9.60	12.48	14.40	19.20	19.20	24.96	
Speed constant	rpm/V	995	765	663	497	497	383	
Speed/torque gradient	rpm/mN.m	22.8	20.8	20.3	19.7	19.7	20.1	
Weight	g	180	180	180	180	180	180	

ADDITIONAL INFORMATION			
Motor thermal resistance:	10.2 K/W	Motor thermal time constant:	768 S
Axial (dynamic):	2.5 N	Radial (5mm from mounting face):	16.0 N
Press-fit force (static):	50 N	Max allowable screw depth into flange:	3.0 mm
Maximum radial play (5mm from mounting face):	≤0.02 mm	Axial play:	0 (<4.0N)
Maximum winding temperature:	155°C	Ambient temperature range:	-30 to 65°C
Standard rear shaft diameter:	3 mm	Standard rear shaft length "L":	0/3.7/5.5 mm

Connection (AWG 22#)	Total Length: L _T =L ₁ +L ₂ +L ₃				
Cable 1: Yellow Winding A	L1:24GP	L1:28GP	L2:BL24	L3:EN16S	L3:EN16T
Cable 2: Red Winding B	22.2	25.9	53.0	10.7	12.0
Cable 3: Blue Winding C	27.4	33.1			
Plug definition (AWG 28#) Molex: 51021-0500	32.6	40.3			
Plug 1: Red Hall 3~16V					
Plug 2: Black Hall GND					
Plug 3: Yellow Hall A					
Plug 4: Red Hall B					
Plug 5: Blue Hall C					

AM-BL2453BF Combination Scheme

Recommended Gearbox:
Planetary Gearbox:
AM-24GP
AM-28GP

Recommended Encoder:
Encoder S: AM-EN1611S***
2~3 Channels
Encoder T: AM-EN1612T***
2~3 Channels

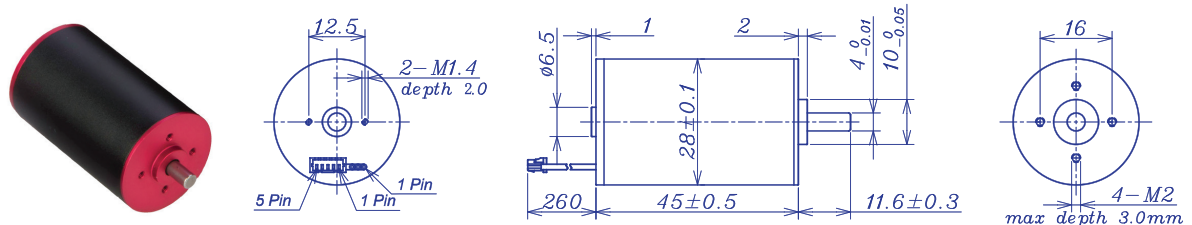
For more combination specs, visit Assun Motor website.

Remarks: Client can choose gearbox and encoder to match with this motor. Some combinations are listed here for reference.

Motor data tested at 25°C. Motor operation exceeding continuous limits will reduce life or result in damage.
At elevated ambient temperatures, load current must be reduced.

Download datasheet: <https://assunmotor.com/documents-download>

AM-BL2845BF Series

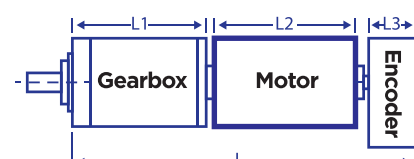


		Brushless Motor			Ball Bearings		
Motor Model		1210	1208	1810	1808	2410	2408
Nominal voltage	V	12	12	18	18	24	24
No load speed ±12%	rpm	10370	7930	10111	7995	10370	8171
No load current Max 150%	mA	417	333	278	222	208	167
Recommend limit for continuous operating	Max cont. torque	mN.m	61.69	61.66	59.87	64.03	65.44
	Rated Speed	rpm	9126	6684	8916	6801	9217
	Rated Current	mA	6000	4600	3800	3200	2900
	Rated Power	W	58.96	43.16	55.90	45.60	57.43
Starting current	mA	50000	29268	32143	21429	26087	17391
Stall torque	mN.m	553	523	546	455	577	488
Maximum power output	W	150.0	87.8	144.6	96.4	156.5	104.3
Maximum Efficiency	%	83	80	82	81	83	81
Terminal resistance ±12%	Ω	0.24	0.41	0.56	0.84	0.92	1.38
Inductance (1KHz)	mH						
Mechanical time constant	ms	2.28	2.28	2.25	2.11	2.19	2.03
Moment of inertia	gcm ²	11.6	11.6	11.6	11.6	11.6	11.6
Torque constant	mN.m/A	11.06	14.45	17.00	21.50	22.10	28.05
Speed constant	rpm/V	864	661	562	444	432	340
Speed/torque gradient	rpm/mN.m	22.8	20.8	20.3	19.7	26.2	20.1
Weight	g	180	180	180	180	180	180

ADDITIONAL INFORMATION			
Motor thermal resistance:	10.2 K/W	Motor thermal time constant:	822 S
Axial (dynamic):	4.0 N	Radial (5mm from mounting face):	16.0 N
Press-fit force (static):	50 N	Max allowable screw depth into flange:	3.0mm
Maximum radial play (5mm from mounting face):	≤0.02 mm	Axial play:	0 (<4.0N)
Maximum winding temperature:	155°C	Ambient temperature range:	-30 to 65°C
Standard rear shaft diameter:	4 mm	Standard rear shaft length "L":	0/3.7/5.5 mm

Connection (AWG 22#)		Total Length: L _T =L ₁ +L ₂ +L ₃				
Cable	Winding	L1:28GP	L1:32GP	L2:BL28	L3:EN16S	L3:EN16T
Cable 1: Yellow	Winding A	25.9	27.4	45.0	10.7	12.0
Cable 2: Red	Winding B	33.1	35.9			
Cable 3: Blue	Winding C	40.3	44.4			
Plug definition (AWG 28#) Molex: 51021-0500						
Plug 1: Red	Hall 3~16V					
Plug 2: Black	Hall GND					
Plug 3: Yellow	Hall A					
Plug 4: Red	Hall B					
Plug 5: Blue	Hall C					

AM-BL2845BF Combination Scheme



Recommended Gearbox:
Planetary Gearbox:
AM-28GP
AM-32GP

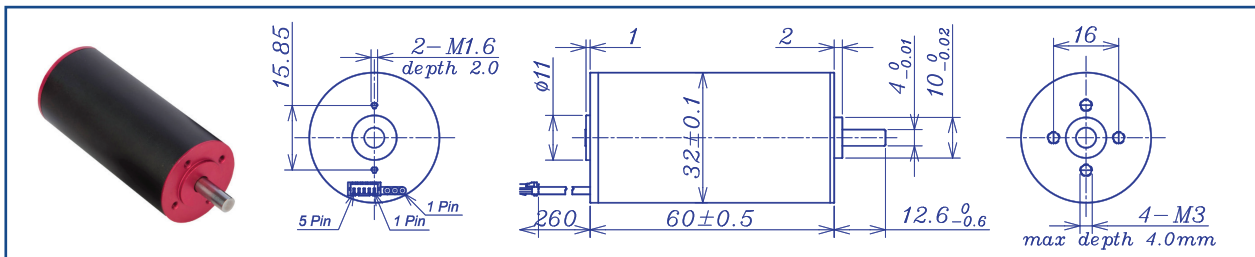
Recommended Encoder:
Encoder S: AM-EN1611S***
2~3 Channels
Encoder T: AM-EN1612T***
2~3 Channels

For more combination specs, visit Assun Motor website.

Motor data tested at 25°C. Motor operation exceeding continuous limits will reduce life or result in damage.
At elevated ambient temperatures, load current must be reduced.

Download datasheet: <https://assunmotor.com/documents-download>

AM-BL3260BF Series



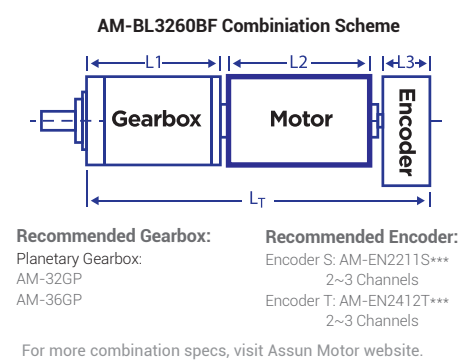
		Brushless Motor			Ball Bearings			
Motor Model		1208	1207	2409	2407	3609	3607	
Nominal voltage	V	12	12	24	24	36	36	
No load speed ±12%	rpm	8244	6870	9160	7495	8833	7274	
No load current Max 150%	mA	400	300	210	180	150	140	
Recommend limit for continuous operating	Max cont. torque	mN.m	119.54	121.76	114.84	116.82	110.92	116.26
	Rated Speed	rpm	7378	6000	8372	6708	8104	6523
	Rated Current	mA	9000	7600	4800	4000	3000	2600
	Rated Power	W	92.36	76.50	100.69	82.05	94.14	79.41
Starting current	mA	85714	60000	55814	38095	36364	25175	
Stall torque	mN.m	1191	1001	1396	1165	1415	1190	
Maximum power output	W	257.1	180.0	334.9	228.6	327.3	226.6	
Maximum Efficiency	%	87	86	88	87	88	86	
Terminal resistance ±12%	Ω	0.14	0.20	0.43	0.63	0.99	1.43	
Inductance (1KH ₂)	mH							
Mechanical time constant	ms	1.11	1.10	1.05	1.03	1.00	0.98	
Moment of inertia	gcm ²	15.3	15.3	15.3	15.3	15.3	15.3	
Torque constant	mN.m/A	13.9	16.68	25.02	30.58	38.92	47.26	
Speed constant	rpm/V	687	572	382	312	245	202	
Speed/torque gradient	rpm/mN.m	6.9	6.9	6.6	6.4	6.2	6.1	
Weight	g	240	240	240	240	240	240	

ADDITIONAL INFORMATION

Motor thermal resistance:	7.8 K/W	Motor thermal time constant:	1089 S
Axial (dynamic):	6.0 N	Radial (5mm from mounting face):	28.0 N
Press-fit force (static):	110 N	Max allowable screw depth into flange:	4.0mm
Maximum radial play (5mm from mounting face):	≤0.02 mm	Axial play:	0 (<6.0N)
Maximum winding temperature:	155°C	Ambient temperature range:	-30 to 65°C
Standard rear shaft diameter:	4 mm	Standard rear shaft length "L":	0/3.7/5.5 mm

Connection (AWG 20#)	Total Length: L _T =L ₁ +L ₂ +L ₃				
Cable 1: Yellow Winding A	L1:28GP	L1:32GP	L2:BL28	L3:EN22S	L3:EN16T
Cable 2: Red Winding B	27.4	39.6	60.0	10.7	12.0
Cable 3: Blue Winding C	35.9	48.6			
Plug definition (AWG 28#) Molex: 51021-0500	44.4	57.6			
Plug 1: Red Hall 3~16V					
Plug 2: Black Hall GND					
Plug 3: Yellow Hall A					
Plug 4: Red Hall B					
Plug 5: Blue Hall C					

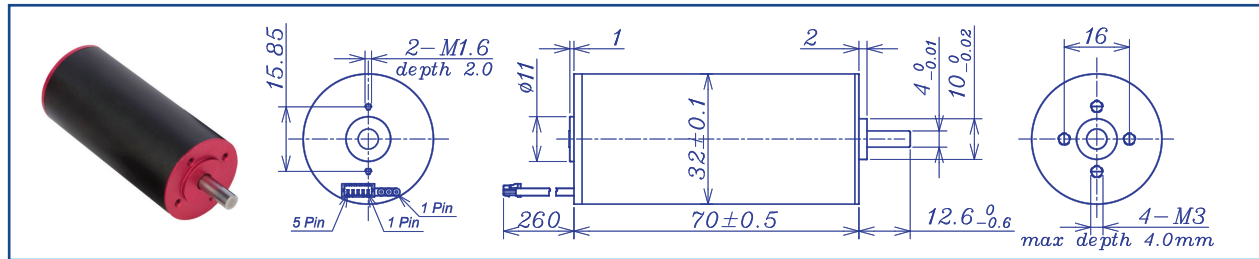
Remarks: Client can choose gearbox and encoder to match with this motor. Some combinations are listed here for reference.



Motor data tested at 25°C. Motor operation exceeding continuous limits will reduce life or result in damage. At elevated ambient temperatures, load current must be reduced.

Download datasheet: <https://assunmotor.com/documents-download>

AM-BL3270BF Series



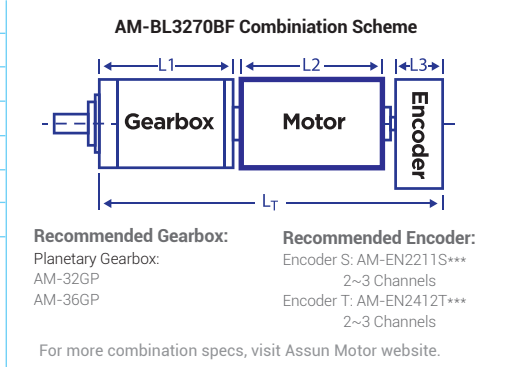
Brushless Motor		Ball Bearings						
Motor Model		1208	1207	2409	2407	3609	3607	
Nominal voltage	V	12	12	24	24	36	36	
No load speed	±12% rpm	8426	6741	8988	7095	8792	7222	
No load current	Max 150% mA	750	500	375	250	250	167	
Recommend limit for continuous operating	Max cont. torque	mN.m	125.8	139.4	123.0	140.5	123.2	139.6
	Rated Speed	rpm	7653	5959	8325	6347	8128	6513
	Rated Current	mA	10000	8700	5200	4600	3400	3100
	Rated Power	W	100.83	86.99	107.27	93.39	104.83	95.221
Starting current	mA	109091	750000	70588	43636	45000	31579	
Stall torque	mN.m	11484	1275	1800	1409	1760	1503	
Maximum power output	W	327.3	225.0	423.5	261.8	405.0	284.2	
Maximum Efficiency	%	84	84	86	85	86	86	
Terminal resistance	±12% Ω	0.11	0.15	0.34	0.55	0.80	1.14	
Inductance (1KHz)	mH							
Mechanical time constant	ms	1.12	1.05	0.99	1.00	0.99	0.95	
Moment of inertia	gcm ²	18.9	18.9	18.9	18.9	18.9	18.9	
Torque constant	mN.m/A	13.6	17.0	25.5	32.3	39.1	47.6	
Speed constant	rpm/V	702	562	374	296	244	201	
Speed/torque gradient	rpm/mN.m	5.7	5.3	5.0	5.0	5.0	4.8	
Weight	g	280	280	280	280	280	280	

ADDITIONAL INFORMATION

Motor thermal resistance:	7.0 K/W	Motor thermal time constant:	1163 S
Axial (dynamic):	6.0 N	Radial (5mm from mounting face):	28.0 N
Press-fit force (static):	110 N	Max allowable screw depth into flange:	4.0 mm
Maximum radial play (5mm from mounting face):	≤0.02 mm	Axial play:	0 (<6.0 N)
Maximum winding temperature:	155°C	Ambient temperature range:	-30 to 65°C
Standard rear shaft diameter:	4 mm	Standard rear shaft length "L":	0/3.7/5.5 mm

Connection (AWG 20#)	Total Length: L _T =L ₁ +L ₂ +L ₃				
	L1:28GP	L1:32GP	L2:BL28	L3:EN22S	L3:EN16T
Cable 1: Yellow Winding A					
Cable 2: Red Winding B	27.4	39.6	70.0	10.7	12.0
Cable 3: Blue Winding C	35.9	48.6			
Plug definition (AWG 28#) Molex: 51021-0500	44.4	57.6			
Plug 1: Red Hall 3~16V					
Plug 2: Black Hall GND					
Plug 3: Yellow Hall A					
Plug 4: Red Hall B					
Plug 5: Blue Hall C					

Remarks: Client can choose gearbox and encoder to match with this motor. Some combinations are listed here for reference.

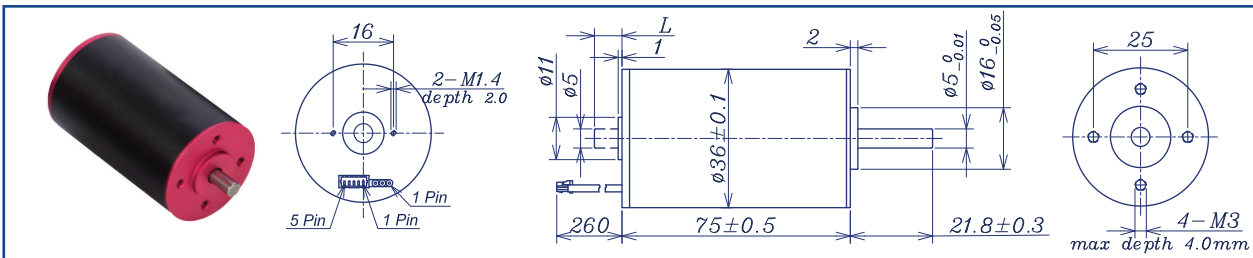


Motor data tested at 25°C. Motor operation exceeding continuous limits will reduce life or result in damage.
At elevated ambient temperatures, load current must be reduced.

Download datasheet: <https://assunmotor.com/documents-download>

Visit Our Website and Online Shop at <https://assunmotor.com> Contact: info@assunmotor.com

AM-BL3675BF Series



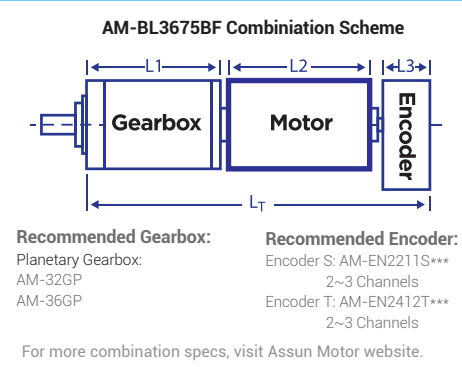
		Brushless Motor			Ball Bearings			
Motor Model		2408	2406	3609	3606	4808	4806	
Nominal voltage	V	24	24	36	36	48	48	
No load speed $\pm 12\%$	rpm	8013	6128	9192	6250	8334	5953	
No load current Max 150%	mA	454	338	339	225	227	169	
Recommend limit for continuous operating	Max cont. torque	mN.m	187.22	211.76	174.32	207.63	185.52	220.26
	Rated Speed	rpm	7452	5530	8694	5674	7815	5394
	Rated Current	mA	7000	6000	5000	4000	3600	2800
	Rated Power	W	146.11	122.64	158.71	123.37	151.83	114.43
Starting current	mA	100000	61538	92308	43373	57831	29814	
Stall torque	mN.m	2860	2302	3452	2386	3181	2296	
Maximum power output	W	600.0	369.2	830.8	390.4	694.30	357.7	
Maximum Efficiency	%	87	86	88	86	88	86	
Terminal resistance $\pm 12\%$	Ω	0.24	0.39	0.39	0.83	0.83	1.61	
Inductance (1KHz)	mH							
Mechanical time constant	ms	1.85	1.76	1.76	1.73	1.73	1.72	
Moment of inertia	gcm ²	63.21	63.21	63.21	63.21	63.21	63.21	
Torque constant	mN.m/A	28.6	37.4	37.4	55	55	77	
Speed constant	rpm/V	334	255	255	174	174	120	
Speed/torque gradient	rpm/mN.m	2.8	2.7	2.7	2.6	2.6	2.6	
Weight	g	400	400	400	400	400	400	

ADDITIONAL INFORMATION

Motor thermal resistance:	5.4 K/W	Motor thermal time constant:	1273 S
Axial (dynamic):	6.0 N	Radial (5mm from mounting face):	28.0 N
Press-fit force (static):	110 N	Max allowable screw depth into flange:	4.0 mm
Maximum radial play (5mm from mounting face):	≤ 0.02 mm	Axial play:	0 (<6.0N)
Maximum winding temperature:	155°C	Ambient temperature range:	-30 to 65°C
Standard rear shaft diameter:	5 mm	Standard rear shaft length "L":	0/3.7/5.5 mm

Connection (AWG 20#)	Total Length: $L_T = L_1 + L_2 + L_3$				
Cable 1: Yellow Winding A	L1:36GP	L1:40GP	L2:BL36	L3:EN22S	L3:EN36T
Cable 2: Red Winding B	39.6	46.8	75	10.7	12.0
Cable 3: Blue Winding C	48.6	58.3			
Plug definition (AWG 28#) Molex: 51021-0500	57.6	69.8			
Plug 1: Red Hall 3~16V					
Plug 2: Black Hall GND					
Plug 3: Yellow Hall A					
Plug 4: Red Hall B					
Plug 5: Blue Hall C					

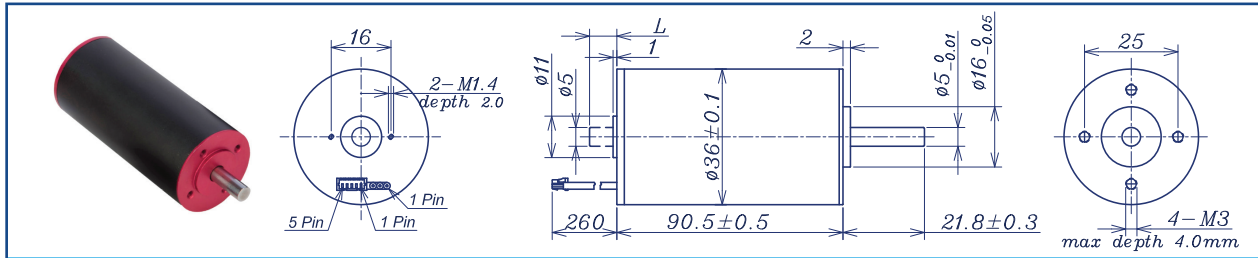
Remarks: Client can choose gearbox and encoder to match with this motor. Some combinations are listed here for reference.



Motor data tested at 25°C. Motor operation exceeding continuous limits will reduce life or result in damage.
At elevated ambient temperatures, load current must be reduced.

Download datasheet: <https://assunmotor.com/documents-download>

AM-BL3690BF Series

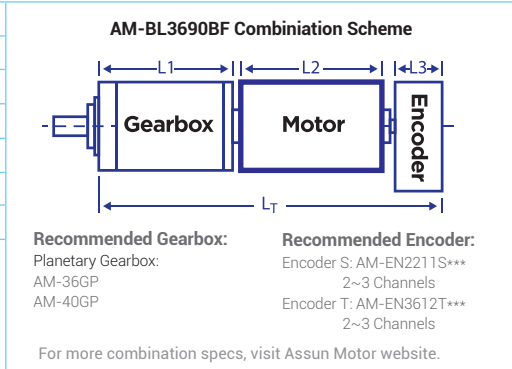


		Brushless Motor		Ball Bearings			
Motor Model		2408	2406	3609	3610	4809	4805
Nominal voltage		V	24	24	36	36	48
No load speed ±12%		rpm	8488	6063	9095	5093	8935
No load current Max 150%		mA	521	358	375	178	125
Recommend limit for continuous operating	Max cont. torque	mN.m	207.33	235.65	205.07	257.99	201.04
	Rated Speed	rpm	7995	5529	8626	4533	8474
	Rated Current	mA	8200	6600	5800	4000	4200
	Rated Power	W	173.59	136.62	185.23	122.46	178.40
Starting current		mA	141176	75000	112500	36364	81356
Stall torque		mN.m	3812	2835	4253	2455	4174
Maximum power output		W	847.1	450.0	1012.5	327.3	976.3
Maximum Efficiency		%	88	87	89	86	89
Terminal resistance ±12%		Ω	0.17	0.32	0.32	0.99	0.59
Inductance (1KHz)		mH					
Mechanical time constant		ms	1.76	1.69	1.69	1.64	1.69
Moment of inertia		gcm ²	74.56	74.56	74.56	74.56	74.56
Torque constant		mN.m/A	27	37.8	37.8	67.5	51.3
Speed constant		rpm/V	354	253	253	141	186
Speed/torque gradient		rpm/mN.m	2.2	2.1	2.1	2.1	2.1
Weight		g	480	480	480	480	480

ADDITIONAL INFORMATION

Motor thermal resistance:	K/W	Motor thermal time constant:	S
Axial (dynamic):	6.0 N	Radial (5mm from mounting face):	28.0 N
Press-fit force (static):	110 N	Max allowable screw depth into flange:	4.0 mm
Maximum radial play (5mm from mounting face):	≤0.02 mm	Axial play:	0 (<6.0N)
Maximum winding temperature:	155°C	Ambient temperature range:	-30 to 65°C
Standard rear shaft diameter:	5 mm	Standard rear shaft length "L":	0/3.7/5.5 mm

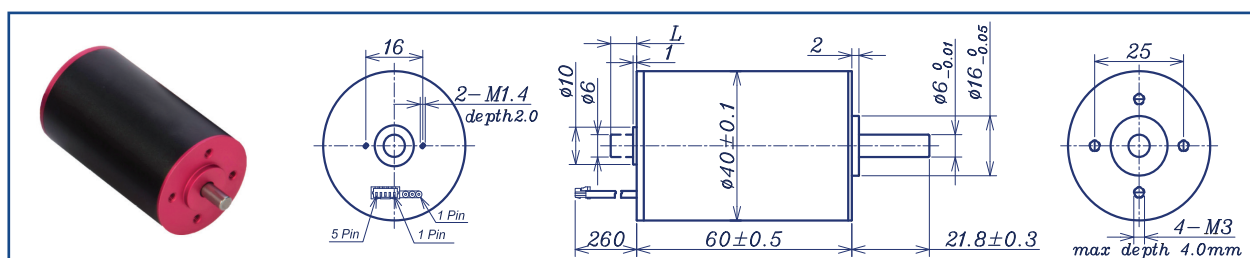
Connection (AWG 20#)		Total Length: L _T =L ₁ +L ₂ +L ₃				
Cable 1: Yellow	Winding A	L1:36GP	L1:40GP	L2:BL36	L3:EN22S	L3:EN36T
Cable 2: Red	Winding B	39.6	46.8	90	10.7	12.0
Cable 3: Blue	Winding C	48.6	58.3			
Plug definition (AWG 28#) Molex: 51021-0500		57.6	69.8			
Plug 1: Red	Hall 3~16V					
Plug 2: Black	Hall GND					
Plug 3: Yellow	Hall A	Remarks: Client can choose gearbox and encoder to match with this motor. Some combinations are listed here for reference.				
Plug 4: Red	Hall B					
Plug 5: Blue	Hall C					



Motor data tested at 25°C. Motor operation exceeding continuous limits will reduce life or result in damage.
At elevated ambient temperatures, load current must be reduced.

Download datasheet: <https://assunmotor.com/documents-download>

AM-BL4060BF Series



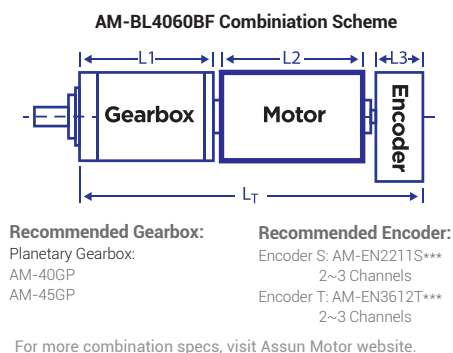
		Brushless Motor			Ball Bearings		
Motor Model		2409	2407	3609	3607	4809	4807
Nominal voltage	V	24	24	36	36	48	48
No load speed ±12%	rpm	9095	7074	9095	7074	9095	7074
No load current Max 150%	mA	375	292	250	150	188	146
Recommend limit for continuous operating	Max cont. torque	mN.m	177.03	184.94	171.99	184.97	182.04
	Rated Speed	rpm	8534	6425	8573	6539	8569
	Rated Current	mA	7400	6000	4800	4000	3800
	Rated Power	W	158.2	126.38	154.41	126.66	163.36
Starting current	mA	120000	77419	83721	52941	65753	40336
Stall torque	mN.m	3024	2508	3165	2573	3314	2614
Maximum power output	W	720.0	464.5	753.5	476.5	789.0	484.0
Maximum Efficiency	%	89	88	89	88	90	88
Terminal resistance ±12%	Ω	0.22	0.31	0.43	0.68	0.7319	1.82
Inductance (1KHz)	mH						
Mechanical time constant	ms	2.72	2.55	2.60	2.49	2.49	2.45
Moment of inertia	gcm ²	86.51	86.51	86.51	86.51	86.51	86.51
Torque constant	mN.m/A	25.2	32.4	37.8	48.6	50.4	64.8
Speed constant	rpm/V	379	295	253	196	189	147
Speed/torque gradient	rpm/mN.m	3.0	2.8	2.9	2.7	2.7	2.7
Weight	g	356	356	356	356	356	356

ADDITIONAL INFORMATION

Motor thermal resistance:	5.6 K/W	Motor thermal time constant:	1163 S
Axial (dynamic):	6.0 N	Radial (5mm from mounting face):	28.0 N
Press-fit force (static):	110 N	Max allowable screw depth into flange:	4.0 mm
Maximum radial play (5mm from mounting face):	≤0.02 mm	Axial play:	0 (<6.0N)
Maximum winding temperature:	155°C	Ambient temperature range:	-30 to 65°C
Standard rear shaft diameter:	5 mm	Standard rear shaft length "L":	0/3.7/5.5 mm

Connection (AWG 20#)	Total Length: L _T =L ₁ +L ₂ +L ₃				
Cable 1: Yellow Winding A	L1:40GP	L1:45GP	L2:BL40	L3:EN22S	L3:EN36T
Cable 2: Red Winding B	35.3	38.8	60	10.7	12.0
Cable 3: Blue Winding C	46.8	50.8			
Plug definition (AWG 28#) Molex: 51021-0500	58.3	62.8			
Plug 1: Red Hall 3~16V					
Plug 2: Black Hall GND					
Plug 3: Yellow Hall A					
Plug 4: Red Hall B					
Plug 5: Blue Hall C					

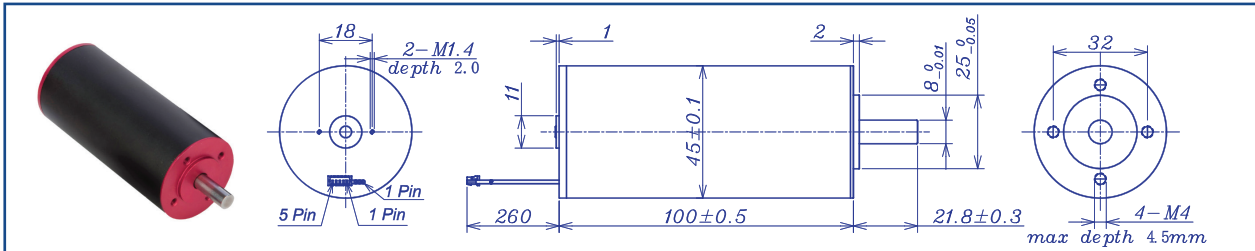
Remarks: Client can choose gearbox and encoder to match with this motor. Some combinations are listed here for reference.



Motor data tested at 25°C. Motor operation exceeding continuous limits will reduce life or result in damage.
At elevated ambient temperatures, load current must be reduced.

Download datasheet: <https://assunmotor.com/documents-download>

AM-BL45100BF Series



		Brushless Motor			Ball Bearings			
Motor Model		2407	2405	3608	3606	4808	4806	
Nominal voltage	V	24	24	36	36	48	48	
No load speed	±12% rpm	6737	5053	8288	5684	7579	6063	
No load current	Max 150% mA	571	371	556	289	367	250	
Recommend limit for continuous operating	Max cont. torque	mN.m	354.79	418.63	292.19	381.69	280.20	359.10
	Rated Speed	rpm	6397	4709	7938	5382	7350	5791
	Rated Current	mA	11000	9600	7600	6600	5000	5000
	Rated Power	W	237.68	206.43	242.88	215.12	215.67	217.79
Starting current	mA	218182	141176	180000	124138	165517	111628	
Stall torque	mN.m	7423	6404	7466	7508	10010	8439	
Maximum power output	W	1390.1	847.1	1620.0	1117.2	1986.2	1339.5	
Maximum Efficiency	%	90	90	89	91	91	91	
Terminal resistance	±12% Ω	0.11	0.17	0.2	0.29	0.29	0.43	
Inductance (1KHz)	mH							
Mechanical time constant	ms	2.16	1.88	2.64	1.8	1.8	1.71	
Moment of inertia	gcm ²	227.14	227.14	227.14	227.14	227.14	227.14	
Torque constant	mN.m/A	34.02	45.36	41.48	60.48	60.48	75.6	
Speed constant	rpm/V	281	211	230	158	158	126	
Speed/torque gradient	rpm/mN.m	0.9	0.8	1.1	0.8	0.8	0.7	
Weight	g	757	757	757	757	757	757	

ADDITIONAL INFORMATION			
Motor thermal resistance:	3.3 K/W	Motor thermal time constant:	1740 S
Axial (dynamic):	8.0 N	Radial (5mm from mounting face):	180.0 N
Press-fit force (static):	170 N	Max allowable screw depth into flange:	4.5 mm
Maximum radial play (5mm from mounting face):	≤0.02 mm	Axial play:	0 (<8.0N)
Maximum winding temperature:	155°C	Ambient temperature range:	-30 to 65°C
Standard rear shaft diameter:	8 mm	Standard rear shaft length "L":	0/3.7/5.5 mm

Connection (AWG 18#)		Total Length: L _T =L ₁ +L ₂ +L ₃				
Cable 1: Yellow	Winding A	L1:45GP	L1:52GP	L2:BL45	L3:EN22S	L3:EN36T
Cable 2: Red	Winding B	62.8	81.0	100.0	10.7	12.0
Cable 3: Blue	Winding C	74.8				
Plug definition (AWG 28#) Molex: 51021-0500						
Plug 1: Red	Hall 3~16V					
Plug 2: Black	Hall GND					
Plug 3: Yellow	Hall A					
Plug 4: Red	Hall B					
Plug 5: Blue	Hall C					

Remarks: Client can choose gearbox and encoder to match with this motor. Some combinations are listed here for reference.

AM-BL45100BF Combination Scheme

Recommended Gearbox:
Planetary Gearbox:
AM-45GP
AM-52GP

Recommended Encoder:
Encoder S: AM-EN2211S***
2~3 Channels
Encoder T: AM-EN3612T***
2~3 Channels

For more combination specs, visit Assun Motor website.

Motor data tested at 25°C. Motor operation exceeding continuous limits will reduce life or result in damage.
At elevated ambient temperatures, load current must be reduced.

Download datasheet: <https://assunmotor.com/documents-download>