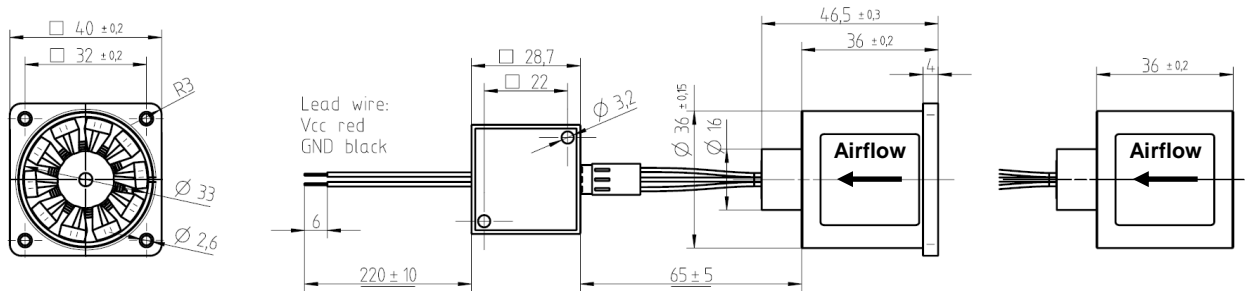
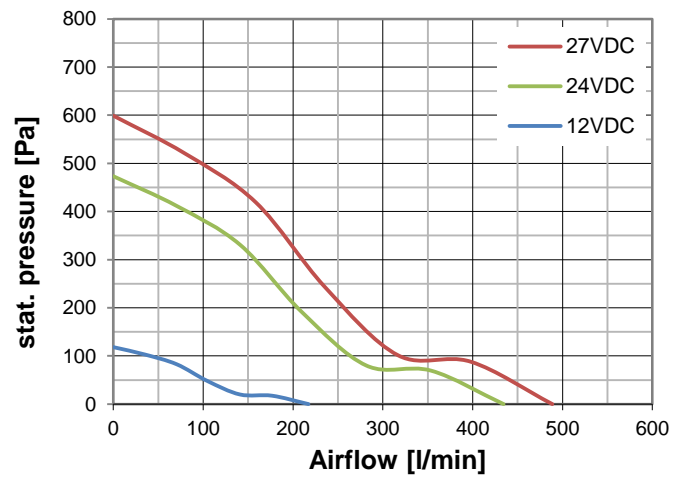
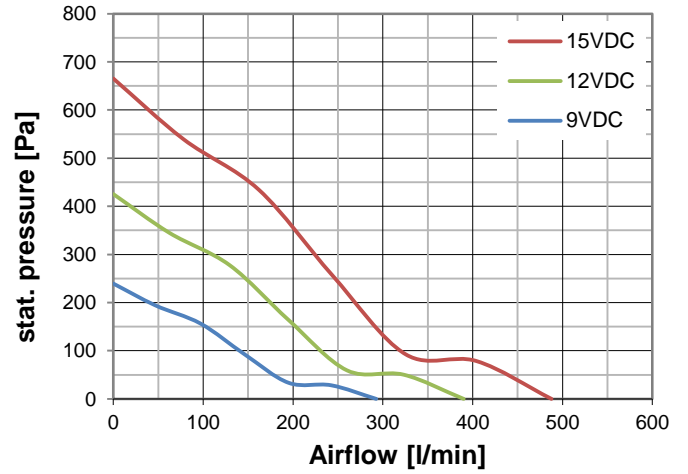
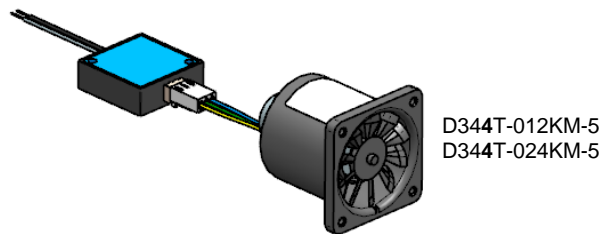
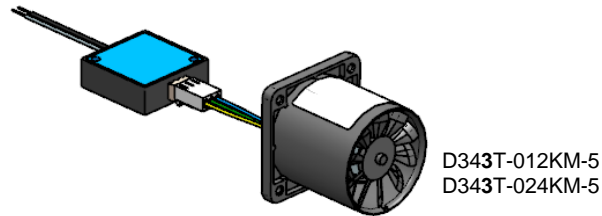
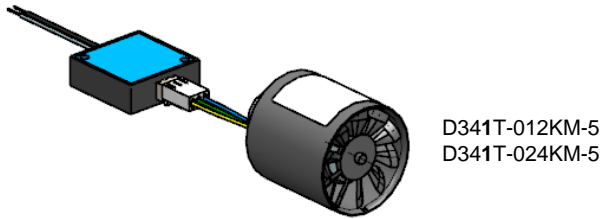


Baureihen Series

D340

Miniatur Axial Gebläse mit externer Elektronik
Miniature Axial fan with external electronic



Technische Daten

Allgemeine Beschreibung

Lüfter mit grossem Volumenstrom, wirtschaftlichem Motor und externer Power-Elektronik.

Eigenschaften: Material: Gehäuse: PPO, Flügelrad: PA.

Elektronisch kommutierter Motor.

Optional: Tacho, Set speed und NTC

Technical data

General description

Fan with a high airflow, economic motor and external power electronic.

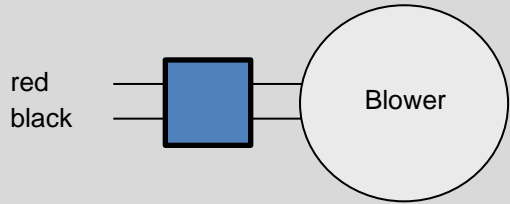
Features: Material: Housing: PPO, Impeller: PA

Electronically commutated motor

Options: Tacho, Set speed and NTC

		D34.T-012KM-5	D34.T-024KM-5
U_N	VDC	12	24
U	VDC	9 – 15	12 - 27
I_N freeblowing	mA	220	200
I_N work. point	mA	215	190
I_N static	mA	290	240
P_N work. point	W	2.6	4.6
n freeblowing	min ⁻¹	18'000	19'720
n work. point	min ⁻¹	17'790	19'780
n static	min ⁻¹	17'400	19'470
V freeblowing	l/min	390	435
V work. point	l/min	195	210
p work. point	Pa	170	190
p static	Pa	430	470
LpA	dB(A)	55.9	57.4
T	°C	-40...+85	
m	gr	56	
Leads	mm	220 (AWG26)	
Housing Material		PPO UL94V-1	
Ball Bearing		•	
Tacho		optional	optional
Set speed		optional	optional
NTC		optional	optional

Data's at Density: 1.2kg/m³

D34.T-...KM-5		
Electrical circuit	Description	Lead wire
	Vcc + Power GND Ground	Diagram 

Electrical features

D34.L-006KH-5

No polarity protection

D34.L-012KH-5

polarity protection
 Overvoltage protection: maximum 28VDC
 Input protected by suppresser diode



**Exceeding the blower limits during continuous operation may cause permanent damage!
 Handle only in currentless condition!**

Power supply requirements

Ripple voltage < 5%

Info

**Specifications are subject to change without notice.
 Specifications on this Datasheet are for reference.**

Version: 16.08.2017 / DH

Doc: D340_ext_Elo high speed.docx