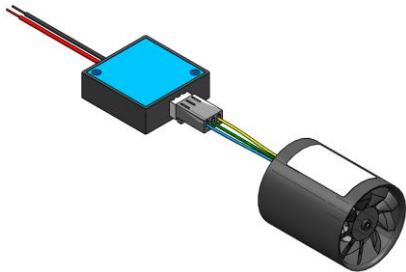
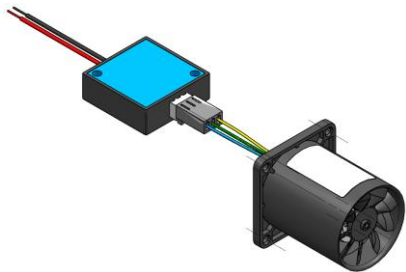


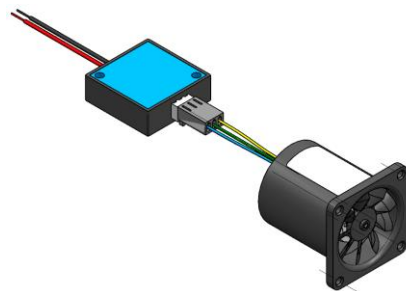
Miniatur Axial Gebläse mit externer Elektronik
Miniature Axial fan with external electronic



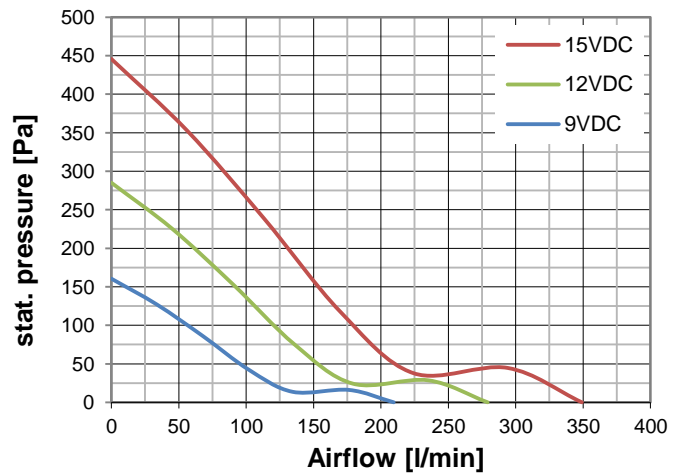
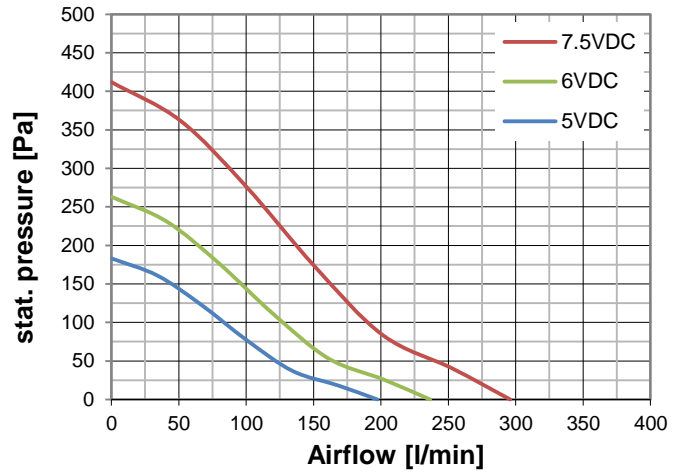
D301L-006KH-5
D301L-012KH-5



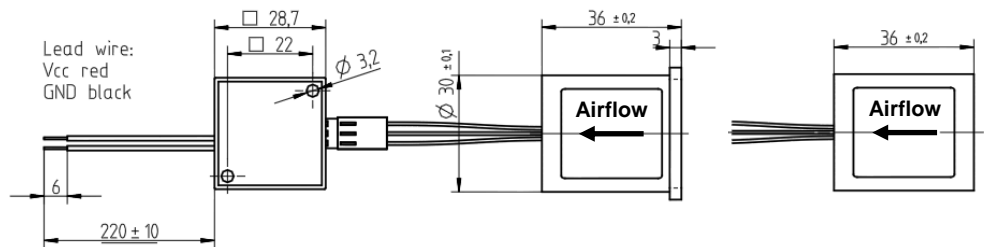
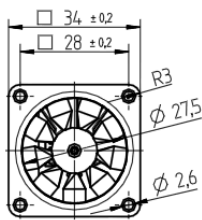
D303L-006KH-5
D303L-012KH-5



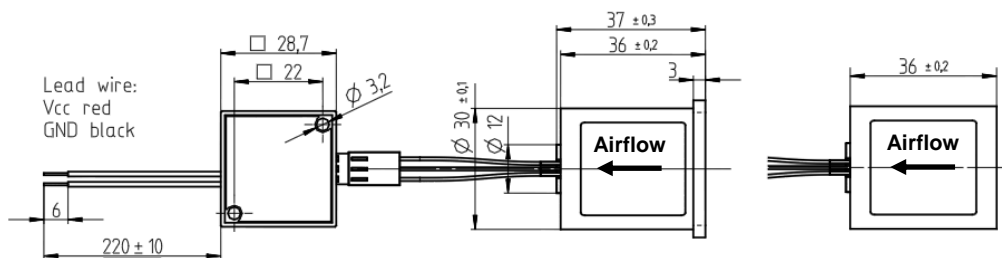
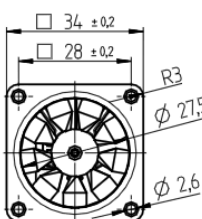
D304L-006KH-5
D304L-012KH-5



6V Version



12V Version



Technische Daten

Allgemeine Beschreibung

Lüfter mit grossem Volumenstrom, wirtschaftlichem Motor und externer Power-Elektronik.

Eigenschaften: Material: Gehäuse: PPO, Flügelrad: PPO.

Elektronisch kommutierter Motor.

Optional: Tacho, Set speed und NTC

Technical data

General description

Fan with a high airflow, economic motor and external power electronic.

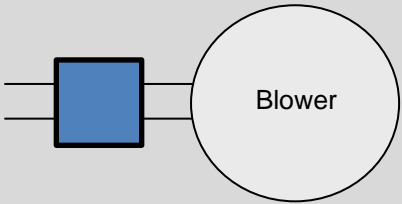
Features: Material: Housing: PPO, Impeller: PPO

Electronically commutated motor

Options: Tacho, Set speed and NTC

		D30.L-006KH-5	D30.L-012KH-5
U_N	VDC	6	12
U	VDC	5 - 7.5	9 – 15
I_N freeblowing	mA	320	190
I_N work. point	mA	300	175
I_N static	mA	320	220
P_N work. point	W	1.8	2.1
n freeblowing	min ⁻¹	20'200	20'130
n work. point	min ⁻¹	20'570	20'320
n static	min ⁻¹	20'050	19'910
V freeblowing	l/min	240	280
V work. point	l/min	120	135
ρ work. point	Pa	110	75
ρ static		260	285
LpA	dB(A)	50.6	51.0
T	°C	-40...+85	
m	gr	40	
Leads	mm	220 (AWG26)	Leads
Housing Material		PPO UL94V-1	
Ball Bearing		•	
Tacho		optional	optional
Set speed		optional	optional
NTC		optional	optional

Data's at Density: 1.2kg/m³

D30.L-...KH-5		
Electrical circuit	Description	Lead wire Diagram
	Vcc + Power GND Ground	red  black

Electrical features

D30.L-006KH-5 No polarity protection

D30.L-012KH-5 polarity protection
 Overvoltage protection: maximum 28VDC
 Input protected by suppresser diode



**Exceeding the blower limits during continuous operation may cause permanent damage!
 Handle only in currentless condition!**

Power supply requirements Ripple voltage < 5%

Info **Specifications are subject to change without notice.
 Specifications on this Datasheet are for reference.**

Version: 07.06.2016 / DH
 Doc: D300_ext_Elo high speed.docx