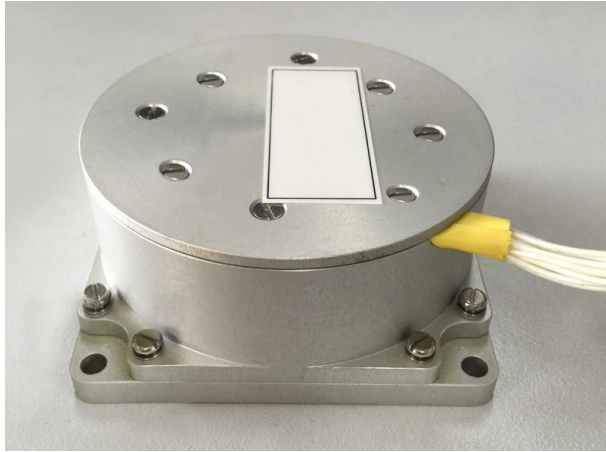
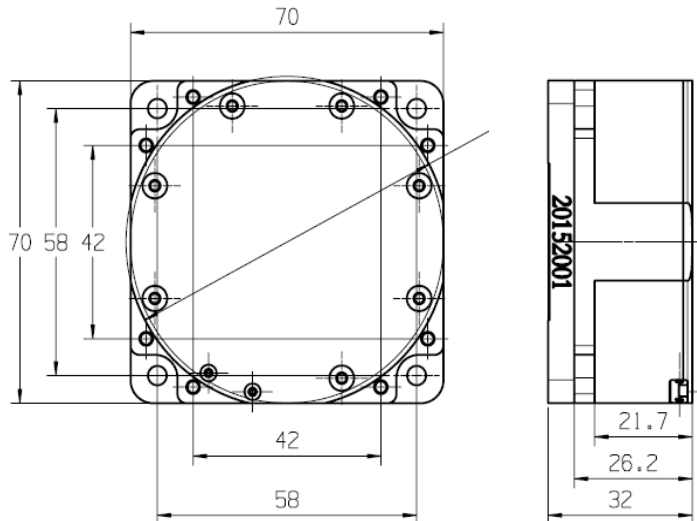


BS-FU27-4-D1EC Type single axis fiber Gyro



- ☑ Higher accuracy with smaller size
- ☑ High-speed rail track detection, photoelectric pod, moving pass, drone



Project	unit	BS-FU27-4-D1EC
Measuring range	°/s	-400~+400
Bias stability in room temperature (°/h, 100s, 1σ)	°/h	≤ 0.012
Bias repeatability in fixed temperature (°/h, 100s, 1σ)	°/h	≤ 0.012
Bias repeatability in full temperature (°/h, 100s, 1σ)	°/h	≤ 0.03
Random walk coefficient	°/√h	≤ 0.0025
Scale factorNonlinear	ppm	≤ 10
Scale factorRepeatability	ppm	≤ 10
Scale factorAsymmetry	ppm	≤ 10
Start Time	min	≤5
bandwidth	Hz	> 200
power supply	V	-5,+5
power	W	≤6
Operating temperature	°C	-40~+65
storage temperature	°C	-45~+85
vibration	Hz, g ² /Hz	20 ~ 2000,0.06
Shock	g, ms	30,11
Data refresh rate	Hz	200~2000
Baud rate	bps	115200~921600
outputmethod	/	Broadcast (default) / triggered (custom)
Interface level	/	RS-422
Connector	/	J30J-15TJL
shape size	mm	Φ70×32