

PC series small circular electrical connectors are small in size, metal aluminum shell, light weight, threaded /cut-in connection, reliable electrical connection, easy to use, currently have 4, 7, 10, 19, 32, 50 cores, commonly compatible with Russia's PC(5)TB - 4 , 7, 10, 19, 32, 50-core products. It is widely used in electrical connections between various electronic instruments and electrical equipment. There are two installation methods: Flange type and cable type. PC plugs and sockets could be male or female according to your needs.

PC



Technical Parameters

| Number of Contacts | 4. 7. 10. 19. 32. 50 | | |
|--------------------|----------------------|--------------------|-----------------|
| Shell Material | Aluminum Alloy | Voltage | 200V |
| Insulator Material | Bakelite/PEI | Contact Resistance | ≤8mΩ |
| Contact Material | Silver, Gold | Contact Dia. | Φ1mm |
| Atmosphere | 101.33KPa-6.67Pa | Endurance | 500 Cycles |
| Vibration | 10-2000Hz | Temperature | -40°C~+200°C |
| Working Current | 3A | Relative Humidity | (92-98)%/40+2°C |

ORDER INFORMATION

Product NO.:

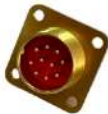
PC- 4 T K

Pins: 4,7,10,19, 32, 50 pin

K-Female
J-Male
T-Plug (Female+Cover)
Z-Box Mounting Receptacle
ZP-Flange Male Plug
P-Cover



T:
Plug (Female+Cover)



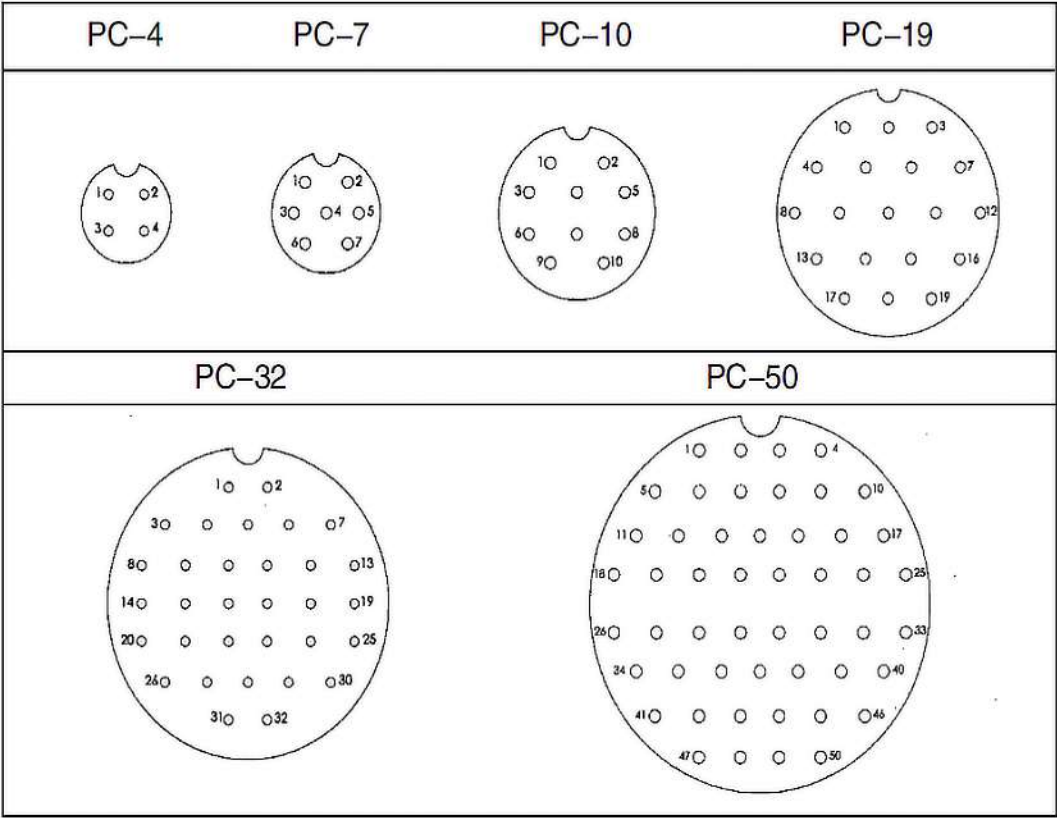
Z
Flange Receptacle



P
Cover

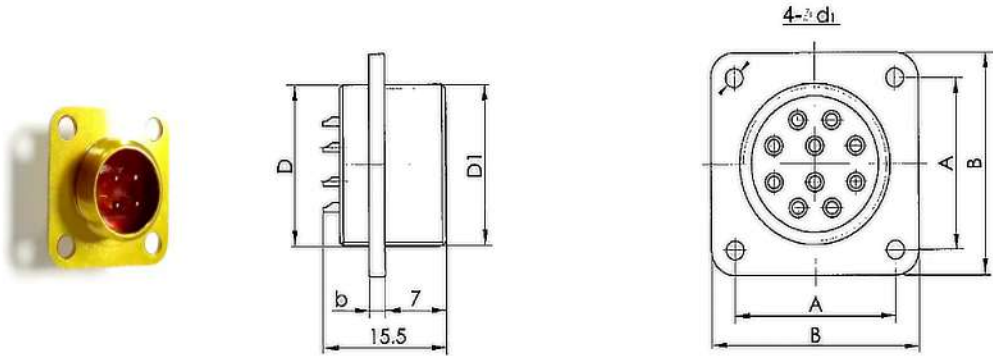


ZP
Flange Male +Cover



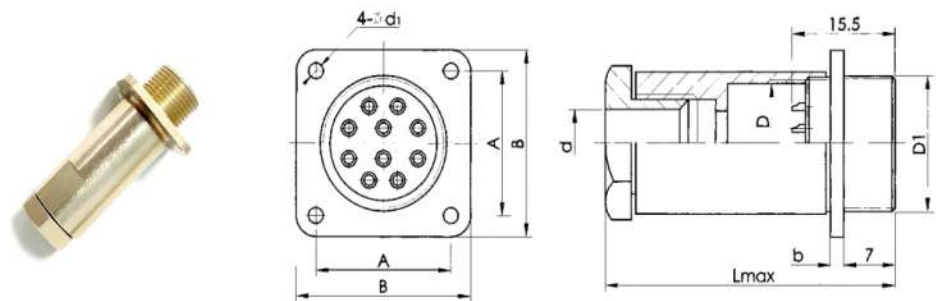
Appearance and installation dimensions

Socket without tail attachment (Thread connection)



| 接触件数量 | D | D ₁ | d1 | A | B | b |
|-------|----------|----------------|-----|----------|------|-----|
| PC-4 | M10×0.75 | M10×0.75 | 2.2 | 11.8±0.1 | 16.5 | 1.4 |
| PC-7 | M12×0.75 | M12×0.75 | 2.2 | 13.2±0.1 | 18 | 1.4 |
| PC-10 | M14×0.75 | M14×0.75 | 2.2 | 15±0.1 | 20 | 1.4 |
| PC-19 | M18×0.75 | M18×1 | 2.2 | 18±0.1 | 24 | 1.4 |
| PC-32 | M22×0.75 | M22×1 | 2.7 | 21.5±0.1 | 28 | 1.8 |
| PC-50 | M27×0.75 | M27×1 | 3.2 | 26±0.1 | 33 | 2.0 |

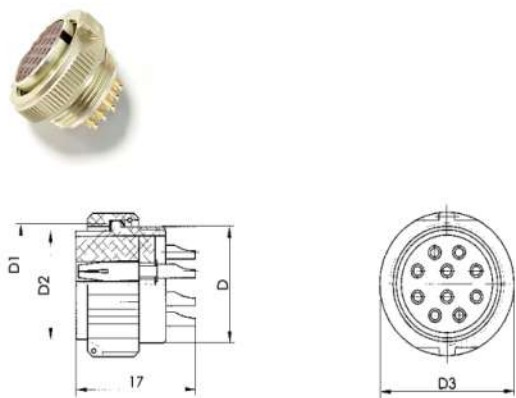
Socket with tail attachment (Thread connection)



PC

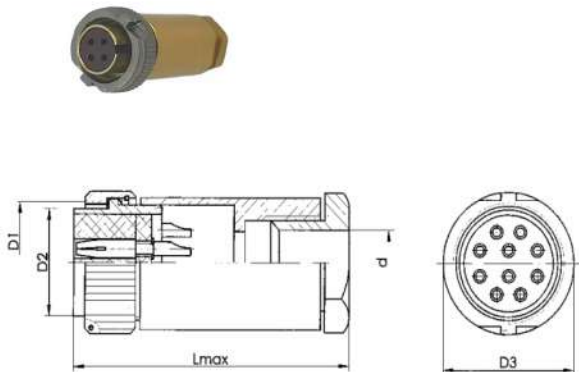
| 型号 | D | D1 | d | b | A | B | d1 | Lmax |
|-------|----------|----------|----|-----|----------|------|-----|------|
| PC-4 | M10×0.75 | M10×0.75 | 6 | 1.4 | 11.8±0.1 | 16.5 | 2.2 | 36 |
| PC-7 | M12×0.75 | M12×0.75 | 8 | 1.4 | 13.2±0.1 | 18 | 2.2 | 38 |
| PC-10 | M14×0.75 | M14×0.75 | 9 | 1.4 | 15±0.1 | 20 | 2.2 | 41 |
| PC-19 | M18×0.75 | M18×1 | 11 | 1.4 | 18±0.1 | 24 | 2.2 | 43 |
| PC-32 | M22×0.75 | M22×1 | 13 | 1.8 | 21.5±0.1 | 28 | 2.7 | 45 |
| PC-50 | M27×0.75 | M27×1 | 16 | 2.0 | 26±0.1 | 33 | 3.2 | 50 |

Cable plug without tail attachment (Thread connection)



| D | D1 | D2 | D3 |
|----------|----------|------|------|
| M10×0.75 | M10×0.75 | 8.2 | 13.8 |
| M12×0.75 | M12×0.75 | 10 | 15 |
| M14×0.75 | M14×0.75 | 12 | 17.7 |
| M18×0.75 | M18×1 | 15.5 | 21.5 |
| M22×0.75 | M22×1 | 19.5 | 26.3 |
| M27×0.75 | M27×1 | 24 | 31.1 |

Cable plug with tail attachment (Thread connection)



| D | D1 | D2 | D3 | d | Lmax |
|----------|----------|------|------|----|------|
| M10×0.75 | M10×0.75 | 8.2 | 13 | 6 | 36 |
| M12×0.75 | M12×0.75 | 10 | 15 | 8 | 38 |
| M14×0.75 | M14×0.75 | 12 | 17.7 | 9 | 41 |
| M18×0.75 | M18×1 | 15.5 | 21.5 | 11 | 42 |
| M22×0.75 | M22×1 | 19.5 | 26.3 | 13 | 42 |
| M27×0.75 | M27×1 | 24 | 31.1 | 16 | 50 |