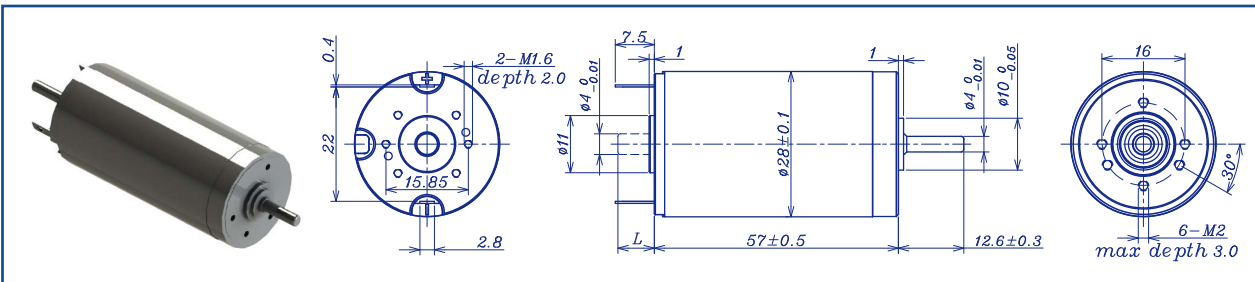


AM-CL2857MAE Series

DC BRUSHED MOTOR

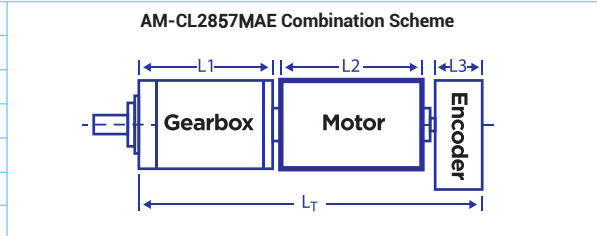


		Precious metal brush			Ball bearings			
Motor Model			0605	0906	1205	1805	2405	3605
Nominal voltage		V	6	9	12	18	24	36
No load speed $\pm 12\%$		rpm	5700	5900	5400	5700	5500	5700
No load current Max 150%		mA	80	56	37	32	19	13
Recommend limit for continuous operating	Max cont. torque	mN.m	21.3	31.2	45.8	42	48.3	47.4
	Rated speed	rpm	5450	5537	4857	5200	5020	5123
	Rated current	mA	2200	2200	2200	1420	1200	800
	Rated power	W	12.1	18.1	23.3	22.9	25.4	25.4
Starting current		mA	48387	34884	21544	16000	11429	7792
Stall torque		mN.m	485	507	456	485	466	468
Maximum power output		W	72.3	78.2	64.4	72.4	68.3	69.9
Maximum efficiency		%	92	92	92	92	92	92
Terminal resistance $\pm 12\%$		Ω	0.124	0.258	0.557	1.15	2.1	4.62
Inductance (1KHZ)		mH	0.018	Null	Null	Null	Null	0.89
Mechanical time constant		ms	3.5	3.5	3.5	3.6	3.6	3.6
Moment of inertia		gcm ²	28.4	28.4	28.4	28.4	28.4	28.4
Torque constant		mN.m/A	10	14.5	21.2	30.2	40.9	60.2
Speed constant		rpm/V	952	657	451	316.7	234	158.6
Speed/torque gradient		rpm/mN.m	11.8	11.6	11.9	11.8	12	12
Weight		g	173	173	173	173	173	173

ADDITIONAL INFORMATION

Motor thermal resistance:	10.3 K/W	Motor thermal time constant:	1175 S
Axial (dynamic):	7.3 N	Radial (5mm from mounting face):	28.0 N
Press-fit force (static):	60(120)N	Max allowable screw depth into flange:	3.0 mm
Maximum radial play (5mm from mounting face):	≤ 0.02 mm	Axial play:	Preset
Maximum winding temperature:	125°C	Ambient temperature range:	-40 to 85 °C

Total Length (Gearbox and Motor) $L_T = L_1 + L_2 + L_3$				
L1:26GP	L1: 28GP	L1:32GP	L2:CL28	L3: EN22S
25.7	26.1	27.4	57.0	10.7
				L3: EN24T
				12



Remarks: Client can choose gearbox and encoder to match with this motor. Some combinations are listed here for reference.

- | | |
|--|---|
| Recommended Gearbox:
Planetary Gearbox:
AM-26GP
AM-28GP
AM-32GP | Recommended Encoder:
Encoder S: AM-EN2211S***
3 Channels
Encoder T: AM-EN2412T***
3 Channels |
|--|---|
- For more combination specs, visit Assun Motor website.

Motor data tested at 25°C. Motor operation exceeding continuous limits will reduce life or result in damage.
At elevated ambient temperatures, load current must be reduced.

Download datasheet: <https://assunmotor.com/documents-download>

Visit Our Website and Online Shop at <https://assunmotor.com> Contact: info@assunmotor.com

2023-A Edition. Specifications are subject to change without notice. Copyright Assun Motor Pte Ltd. All Rights Reserved.