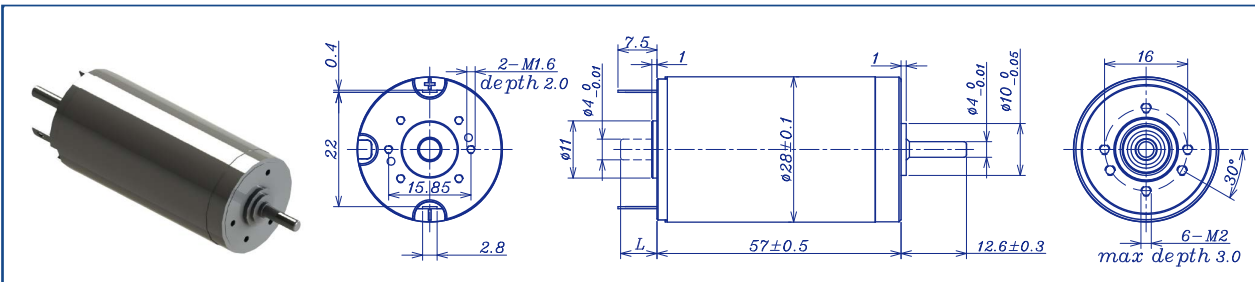


AM-CL2857GAE Series

DC BRUSHED MOTOR



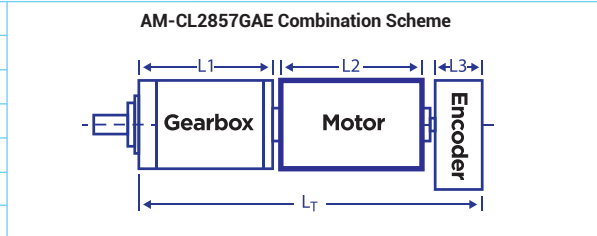
	Graphite brush	Ball bearings					
--	----------------	---------------	--	--	--	--	--

Motor Model		1211	1811	2410	3611	4811	6010	
Nominal voltage	V	12	18	24	36	48	60	
No load speed	±12% rpm	10900	11400	10266	10960	10680	10290	
No load current	Max 150% mA	210	155	95	72	53	40	
Recommend limit for continuous operating	Max cont. torque	mN.m	55.5	51.8	55.8	54.1	55.5	54.4
	Rated speed	rpm	10177	10744	9643	10338	10044	9667
	Rated current	mA	5500	3600	2600	1800	1350	1020
	Rated power	W	59.1	58.3	56.3	58.5	58.4	55.1
Starting current	mA	80000	60000	41379	30508	21818	16216	
Stall torque	mN.m	836.6	900	919.5	952.4	931.9	898.5	
Maximum power output	W	238.7	268.6	247.1	273.3	260.5	242	
Maximum efficiency	%	90	90	91	91	90	90	
Terminal resistance	±12% Ω	0.15	0.3	0.58	1.18	2.2	3.7	
Inductance	(1KHZ) mH	N/A	N/A	0.11	N/A	N/A	N/A	
Mechanical time constant	ms	3.9	3.8	3.3	3.4	3.4	3.4	
Moment of inertia	gcm ²	28.4	28.4	28.4	28.4	28.4	28.4	
Torque constant	mN.m/A	10.5	15.0	22.3	31.3	42.8	55.5	
Speed constant	rpm/V	911	635	429	305	223	172	
Speed/torque gradient	rpm/mN.m	13.0	12.7	11.2	11.5	11.5	11.5	
Weight	g	200	200	200	200	200	200	

ADDITIONAL INFORMATION

Motor thermal resistance:	12.4 K/W	Motor thermal time constant:	**** S
Axial (dynamic):	7.3 N	Radial (5mm from mounting face):	28.0 N
Press-fit force (static):	60(120)N	Max allowable screw depth into flange:	3.5 mm
Maximum radial play (5mm from mounting face):	≤0.02 mm	Axial play:	预压
Maximum winding temperature:	125°C	Ambient temperature range:	-40 to 85°C
Standard rear shaft diameter:	4 mm	Standard rear shaft length "L":	0/3.7/5.5 mm

Total Length (Gearbox and Motor) L _T =L ₁ +L ₂ +L ₃				
L1:26GP	L1:28GP	L1:32GP	L2: CL28	L3: EN22S
25.7	26.1	27.4	57	10.7
36	33.3	35.9		L3: EN24T
44.5	40.5	44.4		12
53	47.7	52.9		



Remarks: Client can choose gearbox and encoder to match with this motor. Some combinations are listed here for reference.

Recommended Gearbox:
Planetary Gearbox:
AM-26GP
AM-28GP
AM-32GP

Recommended Encoder:
Encoder S: AM-EN221S***
2~3 Channels
Encoder T: AM-EN2412T***
2~3 Channels

For more combination specs, visit Assun Motor website.

Motor data tested at 25°C. Motor operation exceeding continuous limits will reduce life or result in damage.
At elevated ambient temperatures, load current must be reduced.

Download datasheet: <https://assunmotor.com/documents-download>

Visit Our Website and Online Shop at <https://assunmotor.com> Contact: info@assunmotor.com