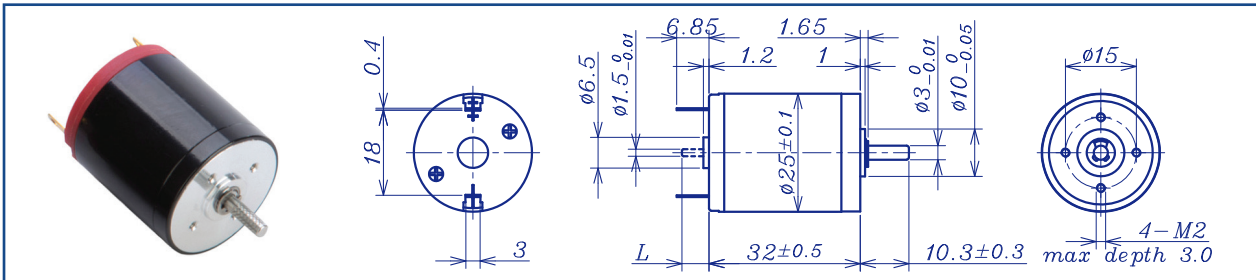


AM-CL2532MAN SERIES



		Precious metal brush				Ball bearings				
Motor Model		0306	0304	0606	0604	1206	1204	2408	2406	2405
Nominal voltage		V	3	3	6	6	12	12	24	24
No load speed ±12%		rpm	6010	3993	6073	4155	6592	4070	8280	6166
No load current Max 150%		mA	120	74	53	37	24	20	20	15
Recommend limit for continuous operation	Max cont. torque	mN.m	3.9	6.2	6.0	7.6	6.5	7.7	6.7	7.5
	Rated speed	rpm	5420	3162	5279	3125	5717	3035	7385	5110
	Rated current	mA	950	950	700	600	400	300	262	220
	Rated power	W	2.2	2.0	3.3	2.5	3.9	2.5	5.8	4.0
Starting current		mA	8571	4286	5000	2308	2857	1121	2242	1212
Stall torque		mN.m	40	30	46	31	49	30	60	44
Maximum power output		W	6.2	3.1	7.3	3.4	8.4	3.2	6.4	7.1
Maximum efficiency		%	78	75	80	76	83	75	82	79
Terminal resistance ±12%		Ω	0.35	0.7	1.2	2.6	4.2	10.7	10.7	19.8
Inductance (1KHZ)		mH	0.014	0.048	0.086	0.02	0.34	0.87	0.87	1.48
Mechanical time constant		ms	17.1	14.8	13.9	15.0	14.4	14.1	14.1	14.8
Moment of inertia		gcm <sup>2</sup>	10.8	10.5	10.1	10.6	10.2	10.1	10.1	9.28
Torque constant		mN.m/A	4.7	7.1	9.3	13.6	17.2	27.7	27.7	36.7
Speed constant		rpm/V	2032	1354	1023	704	554	345	345	260
Speed/torque gradient		rpm/mN.m	151.3	134.5	131.5	134.9	135.0	133.6	133.6	140.3
Weight		g	73.3	72.9	72.4	73.0	72.6	72.4	72.4	72.2

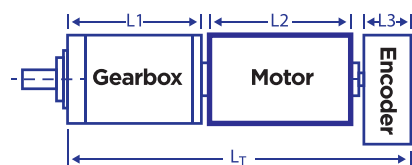
ADDITIONAL INFORMATION

Motor thermal resistance:	16.6 K/W	Motor thermal time constant:	780 S
Axial (dynamic):	7.3 N	Radial (5mm from mounting face):	8.0N
Press-fit force (static):	16(120)N	Max allowable screw depth into flange:	3.0mm
Maximum radial play (5mm from mounting face):	≤0.02 mm	Axial play	Preset
Maximum winding temperature:	85°C	Ambient temperature range:	-30 to °C65
Standard rear shaft diameter:	1.5 mm	Standard rear shaft length "L":	0/3.7 mm

Total Length (Gearbox and Motor) L<sub>T</sub>=L1+L2+L3

L1: 24GP	L1: 26GP	L2:CL25	L3: EN16S
24.0	25.7	32.0	10.7
34.3	36		
42.8	44.5		

AM-CL2532MAN Combination Scheme



Recommended Gearbox: Planetary Gearbox: AM-24GP, AM-26GP  
Recommended Encoder: Encoder S: AM-EN1611S\*\*\* 2~3 Channels

For more combination specs, visit Assun Motor website.

Remarks: Client can choose gearbox and encoder to match with this motor. Some combinations are listed here for reference.

Motor data tested at 25°C. Motor operation exceeding continuous limits will reduce life or result in damage. At elevated ambient temperatures, load current must be reduced.

Download datasheet: <https://assunmotor.com/documents-download>

Visit Our Website and Online Shop at <https://assunmotor.com> Contact: [info@assunmotor.com](mailto:info@assunmotor.com)