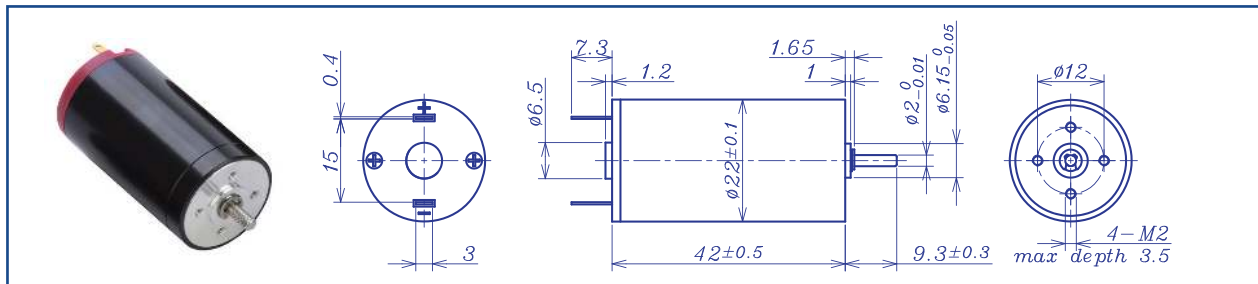


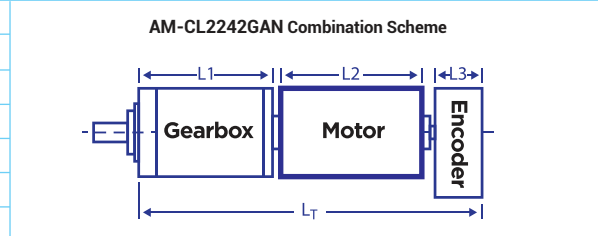
AM-CL2242GAN Series



		Graphite brush				Ball Bearings				
Motor Model		0609	0606	1209	1206	2408	2406	4810	4805	
Nominal voltage	V	6	6	12	12	24	24	48	48	
No load speed	±12% rpm	9020	5720	9596	5818	8100	6260	9732	5260	
No load current	Max 150% mA	130	78	77	45	19	22	18	8.5	
Recommend limit for continuous operating	Max cont. torque	mN.m	7.4	11.1	7.4	11.8	12.1	11.9	9.9	14.8
	Rated Speed	rpm	8453	5019	9044	5078	7340	5501	9105	4398
	Rated Current	mA	1300	1200	700	650	450	350	230	180
	Rated Power	W	6.5	5.9	7.0	6.3	9.3	6.9	9.5	6.8
Starting current	mA	18750	9231	10909	4800	4615	2727	3310	1055	
Stall torque	mN.m	117	91	128	93	130	98	154	90	
Maximum power output	W	27.7	13.6	32.3	14.1	27.5	16.1	39.3	12.5	
Maximum Efficiency	%	84	82	84	82	88	83	86	83	
Terminal resistance	±12% Ω	0.32	0.65	1.10	2.50	5.20	8.80	14.5	45.5	
Inductance (1KHz)	mH	0.014	0.046	0.075	0.023	0.47	0.81	1.35	4.45	
Mechanical time constant	ms	7.1	5.8	6.7	5.9	5.7	6.0	5.8	5.5	
Moment of inertia	gcm ²	8.86	8.73	8.61	8.99	8.73	8.99	8.79	9.06	
Torque constant	mN.m/A	6.3	9.9	11.9	19.5	28.2	36.3	46.8	86.4	
Speed constant	rpm/V	1514	961	805	489	339	263	204	110	
Speed/torque gradient	rpm/mN.m	76.8	62.9	74.7	62.7	62.5	63.7	63.1	58.2	
Weight	g	80.2	80.1	79.8	80.4	80.1	80.4	80.1	80.5	

ADDITIONAL INFORMATION			
Motor thermal resistance:	18.4 K/W	Motor thermal time constant:	798 S
Axial (dynamic):	5.9 N	Radial (5mm from mounting face):	8.0 N
Press-fit force (static):	16(70) N	Max allowable screw depth into flange:	3.5 mm
Maximum radial play (5mm from mounting face):	≤0.02 mm	Axial play:	Preset
Maximum winding temperature:	85°C	Ambient temperature range:	-30 to 65°C
Standard rear shaft diameter:	2 mm	Standard rear shaft length "L":	0/3.7 mm

Total Length (Gearbox and Motor): L _T =L1+L2+L3			
L1:20GP	L1:24GP	L2:CL22	L3:EN22S
18.8	22.2	42.0	10.7
23.6	27.4		
28.4	32.6		



Remarks: Client can choose gearbox and encoder to match with this motor. Some combinations are listed here for reference.

Recommended Gearbox:
 Planetary Gearbox:
 AM-20GP
 AM-24GP

Recommended Encoder:
 Encoder S: AM-EN2211S***
 2~3 Channels

For more combination specs, visit Assun Motor website.

Motor data tested at 25°C. Motor operation exceeding continuous limits will reduce life or result in damage.
 At elevated ambient temperatures, load current must be reduced.

Download datasheet: <https://assunmotor.com/documents-download>