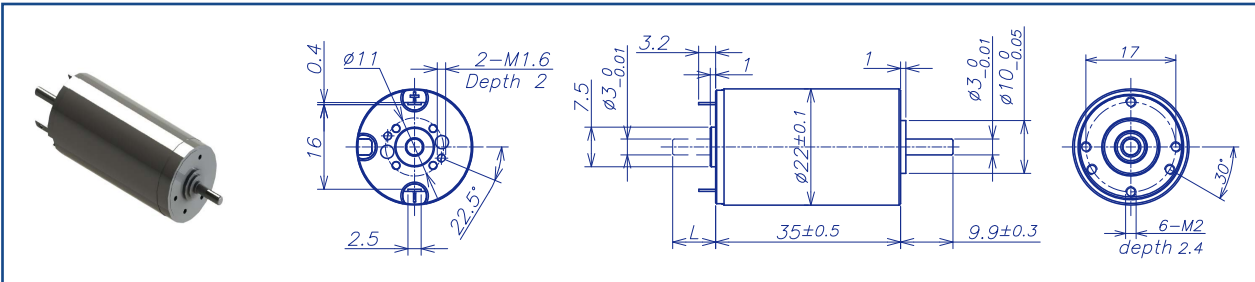


AM-CL2235GAE Series

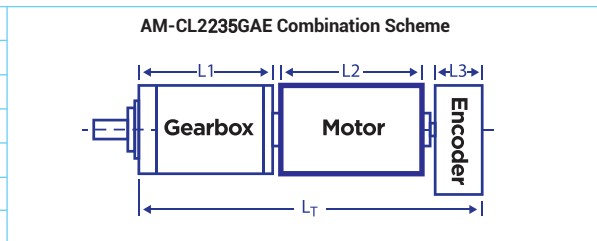


		Graphite brush		Ball bearings				
Motor Model			0612	1212	1812	2412	3612	4812
Nominal voltage		V	6	12	18	24	36	48
No load speed ±12%		rpm	12000	11800	12100	12000	12200	12300
No load current Max 150%		mA	330	160	110	80	60	45
Recommend limit for continuous operating	Max cont. torque	mN.m	12.1	13.3	12.5	13.2	12.2	12.7
	Rated speed	rpm	10855	10555	11011	10796	11083	11173
	Rated current	mA	2900	1550	1000	780	500	390
	Rated power	W	13.8	14.7	14.4	14.9	14.2	14.9
Starting current		mA	27273	13333	10000	7059	4865	3810
Stall torque		mN.m	127.1	126.4	138.9	131.8	133.7	138.6
Maximum power output		W	39.9	39	44	41.4	42.7	44.6
Maximum efficiency		%	79	79	80	80	79	79
Terminal resistance ±12%		Ω	0.22	0.9	1.8	3.4	7.4	12.6
Inductance (1KHZ)		mH	0.023	0.11	Null	0.35	0.8	1.4
Mechanical time constant		ms	6	6	5.6	5.8	5.8	5.7
Moment of inertia		gcm <sup>2</sup>	6.1	6.1	6.1	6.1	6.1	6.1
Torque constant		mN.m/A	4.7	9.6	14	18.9	27.8	36.8
Speed constant		rpm/V	2024	995	680	506	343	259
Speed/torque gradient		rpm/mN.m	94.4	93.4	87.1	91.1	91.2	88.7
Weight		g	75	75	75	75	75	75

ADDITIONAL INFORMATION

Motor thermal resistance:	**** K/W	Motor thermal time constant:	**** S
Axial (dynamic):	2.5 N	Radial (5mm from mounting face):	16.0 N
Press-fit force (static):	16(90)N	Max allowable screw depth into flange:	2.4 mm
Maximum radial play (5mm from mounting face):	≤0.02 mm	Axial play:	Preset
Maximum winding temperature:	125°C	Ambient temperature range:	-40 to 85 °C

Total Length (Gearbox and Motor): L <sub>T</sub> =L <sub>1</sub> +L <sub>2</sub> +L <sub>3</sub>			
L1:24GP	L1:26GP	L2: CL22	L3: EN16S
24	25.7	35	10.7
34.3	36		L3: EN16T
42.8	44.5		12
51.3	53		



Remarks: Client can choose gearbox and encoder to match with this motor. Some combinations are listed here for reference.

**Recommended Gearbox:**  
Planetary Gearbox:  
AM-24GP  
AM-26GP

**Recommended Encoder:**  
Encoder S: AM-EN1611S\*\*\*  
3 Channels  
Encoder T: AM-EN1612T\*\*\*  
3 Channels

For more combination specs, visit Assun Motor website.

Motor data tested at 25°C. Motor operation exceeding continuous limits will reduce life or result in damage.  
At elevated ambient temperatures, load current must be reduced.

Download datasheet: <https://assunmotor.com/documents-download>

Visit Our Website and Online Shop at <https://assunmotor.com> Contact: [info@assunmotor.com](mailto:info@assunmotor.com)