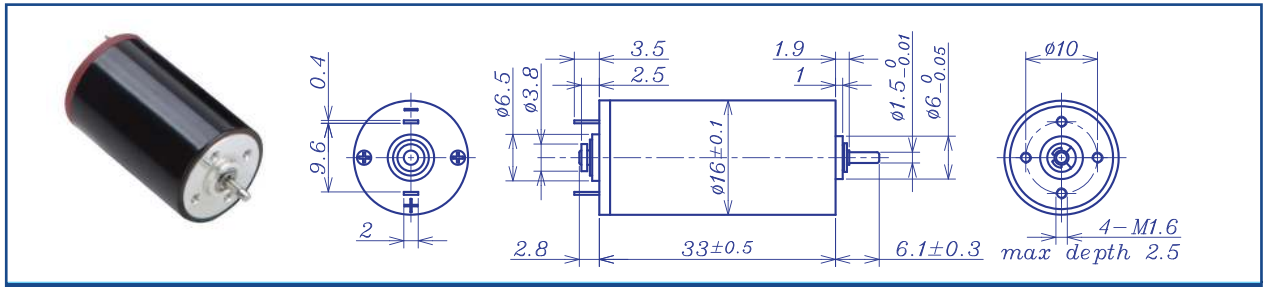


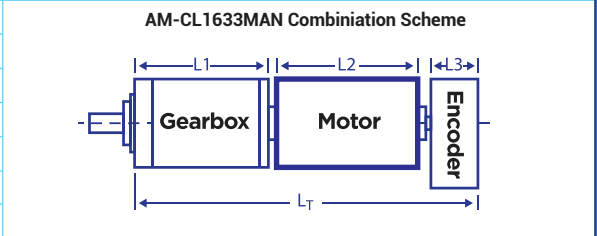
AM-CL1633MAN SERIES



		Precious metal brush			Ball bearings				
Motor Model		0308	0305	0607	0606	0605	1207	1205	
Nominal voltage	V	3	3	6	6	6	12	12	
No load speed	±12% rpm	7700	5370	7250	5790	5280	6600	5200	
No load current	Max 150% mA	50	30	35	22	24	14	12	
Recommend limit for continuous operating	Max cont. torque	mN.m	2.9	3.3	3.5	3.7	3.5	3.2	3.6
	Rated speed	rpm	6204	3931	5775	4354	3813	5165	3683
	Rated current	mA	850	650	480	400	350	200	200
	Rated power	W	1.9	1.3	2.1	1.7	1.4	1.7	1.4
Starting current	mA	4167	2344	2222	1546	1198	870	583	
Stall torque	mN.m	15	12	17	15	1.2	15	12	
Maximum power output	W	3.1	1.7	3.2	2.3	1.7	2.5	1.7	
Maximum efficiency	%	79	79	76	78	74	76	73	
Terminal resistance	±12% Ω	0.72	1.28	2.7	3.88	5.01	13.8	20.6	
Inductance	(1KHZ) mH	0.024	0.061	0.15	0.22	0.28	0.74	1.21	
Mechanical time constant	ms	11.5	10.7	10.4	9.5	10.3	10.5	10.2	
Moment of inertia	gcm ²	2.15	2.32	2.32	2.32	2.32	2.22	2.29	
Torque constant	mN.m/A	3.7	5.3	7.8	9.8	10.6	17.1	21.5	
Speed constant	rpm/V	2598	1813	1228	979	898	559	444	
Speed/ torque gradient	rpm/mN.m	509	441	426	389	423	452	426	
Weight	g	27.9	28.7	28.7	28.6	28.7	28.1	28.6	

ADDITIONAL INFORMATION			
Motor thermal resistance:	25.2K/W	Motor thermal time constant:	1286S
Axial (dynamic):	1.0 N	Radial (5mm from mounting face):	180.0 N
Press-fit force (static):	16 (90)N	Max allowable screw depth into flange:	4.5mm
Maximum radial play (5mm from mounting face):	≤0.02 mm	Axial play	0 (<8.0N)
Maximum winding temperature:	85°C	Ambient temperature range:	-30 to 65°C
Standard rear shaft diameter:	2 mm	Standard rear shaft length "L":	0/3.7 mm

Total Length (Gearbox and Motor): L _T =L ₁ +L ₂ +L ₃			
L1:16GP	L1: 20GP	L2:CL16	L3: EN16S
15.9	18.8	33.0	10.7
23.3	23.6		
27.0	28.4		



Remarks: Client can choose gearbox and encoder to match with this motor. Some combinations are listed here for reference.

Recommended Gearbox:
Planetary Gearbox:
AM-16GP
AM-20GP

Recommended Encoder:
Encoder S: AM-EN1611S***
2~3 Channels

For more combination specs, visit Assun Motor website.

Motor data tested at 25°C. Motor operation exceeding continuous limits will reduce life or result in damage. At elevated ambient temperatures, load current must be reduced.

Download datasheet: <https://assunmotor.com/documents-download>