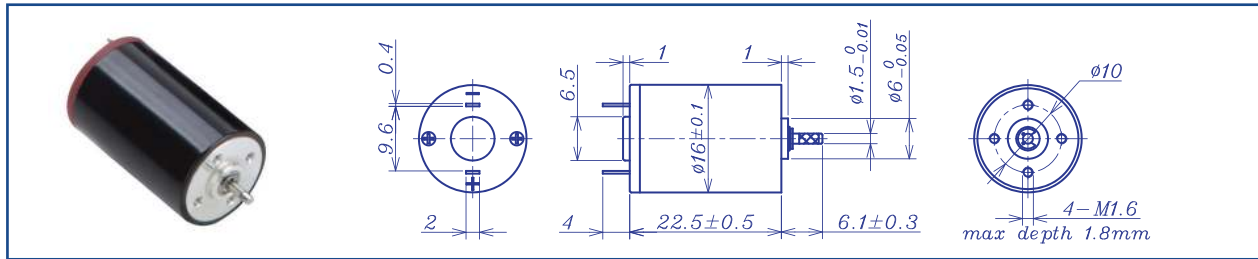


## AM-CL1623MAN SERIES

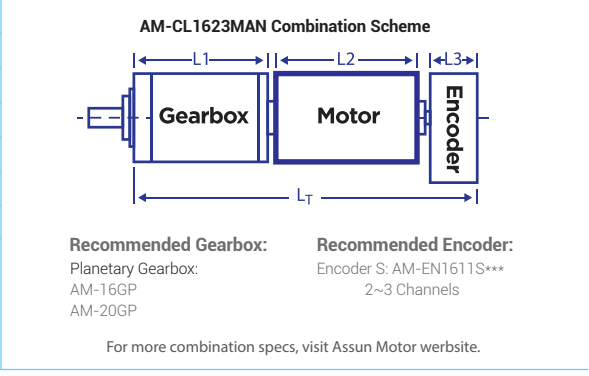


		Precious metal brush			Ball Bearings				
Motor Model			0109	0108	0310	0308	0610	0608	1212
Nominal voltage	V		1.5	1.5	3	3	6	6	12
No load speed	±12%	rpm	9100	7850	10130	7690	9875	7574	12440
No load current	Max 150%	mA	60	55	35	23	22	18	14
Recommend limit for continuous operating	Max cont. torque	mN.m	1.2	1.3	1.9	2.1	2.2	2.1	2.1
	Rated Speed	rpm	7596	6106	7674	5142	7202	4861	9839
	Rated Current	mA	850	800	700	600	400	300	250
	Rated Power	W	1.0	0.9	1.5	1.1	1.6	1.1	2.2
Starting current		mA	4839	3409	2778	1765	1418	805	1143
Stall torque		mN.m	7	6	8	6	8	6	10
Maximum power output		W	1.8	1.2	2.0	1.3	2.1	1.2	3.3
Maximum Efficiency		%	79	76	79	78	77	72	79
Terminal resistance	±12%	Ω	0.31	0.44	1.08	1.7	4.23	7.45	10.5
Inductance (1KHz)		mH	0.001	0.006	0.038	0.058	0.15	0.27	0.41
Mechanical time constant		ms	17.6	18.7	19.0	17.2	16.9	17.7	16.9
Moment of inertia		gcm <sup>2</sup>	1.37	1.37	1.37	1.37	1.3	1.3	1.33
Torque constant		mN.m/A	1.6	1.8	2.8	3.7	5.7	7.4	9.1
Speed constant		rpm/V	6143	5319	3420	2597	1672	1291	1050
Speed/torque gradient		rpm/mN.m	1225	1304	1323	1201	1238	1301	1211
Weight		g	18.6	18.6	18.6	18.4	18.4	18.4	18.5

**ADDITIONAL INFORMATION**

Motor thermal resistance:	41.7K/W	Motor thermal time constant:	379S
Axial (dynamic):	0.8 N	Radial (5mm from mounting face):	12 N
Press-fit force (static):	26 N	Max allowable screw depth into flange:	1.8 mm
Maximum radial play (5mm from mounting face):	≤0.02 mm	Axial play:	Preset
Maximum winding temperature:	85°C	Ambient temperature range:	-30 to 65°C
Standard rear shaft diameter:	2 mm	Standard rear shaft length "L":	0/3.7 mm

Total Length (Gearbox and Motor): L <sub>T</sub> =L1+L2+L3			
L1:16GP	L1:20GP	L2:CL16	L3
15.9	18.8	22.50	-
23.3	23.6		
27.0	28.4		



Remarks: Client can choose gearbox and encoder to match with this motor. Some combinations are listed here for reference.

Motor data tested at 25°C. Motor operation exceeding continuous limits will reduce life or result in damage. At elevated ambient temperatures, load current must be reduced.

Download datasheet: <https://assunmotor.com/documents-download>