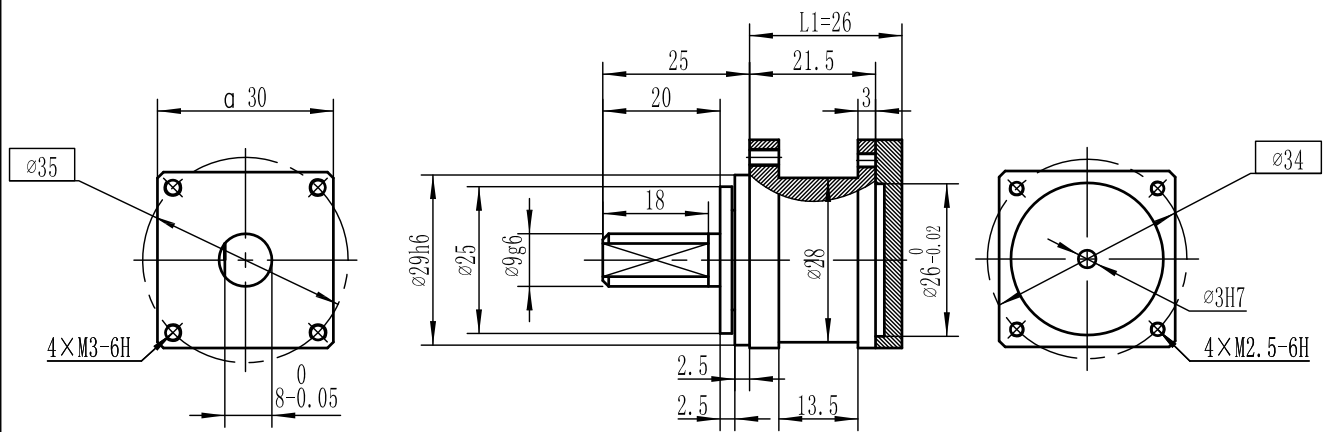
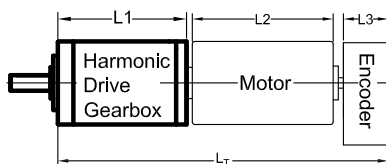


Harmonic Drive Gearbox
Mini
AM-36XB(CSF-8)series



Parameter	30	50	80	100
Ratio	30	50	80	100
The absolute value of the ratio (rigid wheel fixed, flexible wheel output, wave generator input), negative sign means the input and output directions are opposite	-30=60/ (60-62)	-50=100/ (100-102)	-80=160/ (160-162)	-100=200/ (200-202)
Number of teeth in rigid wheel	62	102	162	202
Number of teeth in flexible wheel	60	100	160	200
Nominal torque (N.m)	0.9	1.8	2.2	2.4
Peak torque at start-stop (N.m)	1.8	3.3	4.3	4.8
Maximum of average load torque (N.m)	1.4	2.3	2.9	3.3
Max intermittent torque (N.m)	3.3	6.6	8	9
Backlash (Arcses)	≤20	≤20	≤10	≤10
Maximum input speed (r/min)	8500			
Average input speed (r/min)	3500			
Inertia (1/4GD) (Kgcm ²)	3.2×10 ⁻³			
Efficiency in nominal torque (25° C)	58%	60%	59%	59%
Rigidity (spring constant) (×10 ⁴ N.m/rad)	0.054	0.084	0.120	0.120
Weight (g)	111			
Minimum motor power to adapt (W)	10			
Harmonic drive gearbox model	AM-36XBC-30	AM-36XBC-50	AM-36XBC-80	AM-36XBC-100

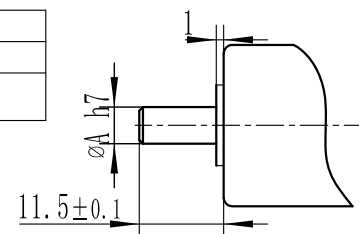
AM-36XBC example of combination



Shaft assemble data

Shaft Dia	∅3h7
Shaft length	11.5
With 2-M2×3GB/T73-1985 hexagon flat-end set screws	

Motor



Coreless Motor (w/E):

- AM-CL26***
- AM-CL28***
- AM-CL29***

Brushless Motor (w/E):

- AM-BL24***
- AM-BL28***
- AM-BL32***
- AM-BD24***

Recommend Encoder:

Suitable for Coreless Motor:
Encoder S: AM-EN2211S***
Encoder T: AM-EN2412T***

Suitable for Brushless Motor

Encoder S: AM-EN1611S***
Encoder S: AM-EN2211S***
Encoder T: AM-EN2412T***

Gear Motor Length "LT":

Gear Motor L _T	Harmonic L1	Motor L2	Encoder L3
68	26	42	-
83.7	26	47	10.7
95	26	57	12
91	26	53	12

For more motor and encoder specs, see Assun Motor website.