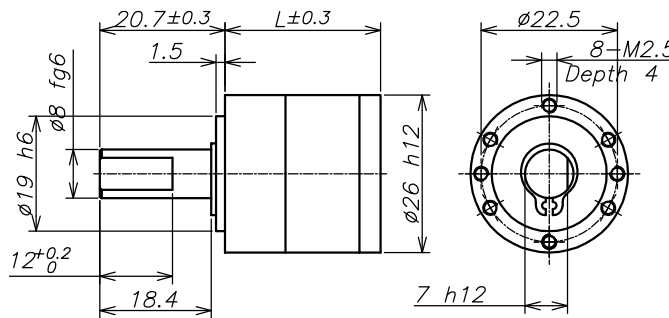


Planetary Gearbox AM-26GP Series



DRIVING THE FUTURE



Technical Data :

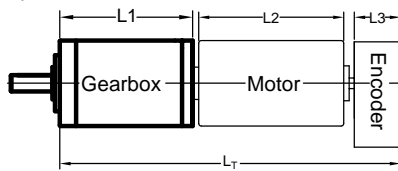
- Gear Type: Straight teeth
- Output Shaft: Stainless steel hardened
- Main Gear: Alloy steel hardened
- Ring Gear: Stainless steel hardened
- Adapter plate: Stainless steel
- Bearing at output: Ball bearing
- Axial play: 0~0.3
- Directions: CW/CCW
- Radial play: (10mm from flange) max. 0.1mm
- Permissible force for press fits: max. 150 N
- Permissible axial load(dynamic): max. 110N
- Recommended input speed: 10000RPM
- Operating Temperature Range: -40 °C~+100 °C
- Operating Humidity Range: 10 ~ 90%RH
- Number of stages: 1 2 3 4
- Permissible radial load: (10mm from flange) 150N 170N 170N 170N

Gearbox data:

Number of stage	1			2			3			4		
	Reduction ratio X:1	3.7	4.3	6.0	13 16 19 22 26	36	49 58 69 81 95	113 132 156	216	181 214 252 298 353 413	488 572 676	792 936 1296
Reduction ratio absolute	11/3	13/3	6/1	121/9 143/9 169/9 221/1 26/1	36/1	1331/27 1573/27 1859/27 2197/27 286/3	338/3 132/1 156/1 216/1	216/1	14641/81 17303/81 20449/81 24167/81 28561/81 3718/9	4394/9 572/1 676/1	792/1 936/1 1296/1	
Motor shaft max. diametre (mm)	4	2	4	2	4	2	4	2	4	2	4	2
Gearbox length "L" (mm)	25.7			36			44.5			53		
Max. continuous torque (N · m)	1			3			5			6		
Max. intermittent torque (N · m)	1.5			4.5			7.5			9		
Average Backlash no load	1.2°			1.4°			1.5°			1.5°		
Gearbox efficiency	90%			81%			73%			65%		
Max. mass inertia (g.cm ²)	0.63			0.58			0.58			0.58		
Gearbox weight Approx (g)	110			140			170			200		
Gearbox model	AM-26GPA-X			AM-26GPB-X			AM-26GPC-X			AM-26GPD-X		

"X" Stand for RATIO

AM-26GP Example of cobination



Recommend Motor:
Coreless Motor (w/E):
AM-CL2532MA
AM-CL2545MA
AM-CL2642GA
AM-CL2657GA
AM-CL2831MA
AM-CL2845MA

Brushless Motor (w/E):
AM-BL2032A AM-BL2845A
AM-BL2040A AM-BL2845B
AM-BL2051A AM-BD2845A
AM-BL2453A
AM-BL2453B

Recommend Encoder:
Suitable for Coreless Motor
Encoder S: AM-EN2211S***
2~3 Channels

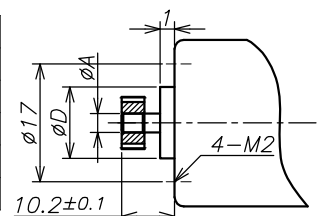
Suitable for Brushless Motor
Encoder S: AM-EN2211S***
2~3 Channels
Encoder T: AM-EN2412T***
2~3 Channels

For more motor and encoder specs, see Assun Motor website.

Input Gear Data

Modulus	0.5		
Press Angle	20°		
Teeth Number	8	12	15
Max. Gear Hole "A"	2.5	4	4
Max. Motor Shaft	2.5	4	4
Motor Dimension "D"	6	8	8.5

Motor Dimension



Gear motor length "LT":

Gear motor length LT	Gearbox length L1	Motor length L2	Encoder length L3
88.7	36	42	10.7
112.2	44.5	57	10.7
110	53	45	12

Edition: A Confirm: 龚远宽 Date: 2021-11-09