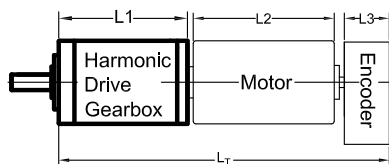


Parameter			
Ratio	30	50	80
The absolute value of the ratio (rigid wheel fixed, flexible wheel output, wave generator input), negative sign means the input and output directions are opposite	-30=60/ (60-62)	-50=100/ (100-102)	-80=160/ (160-162)
Number of teeth in rigid wheel	62	102	162
Number of teeth in flexible wheel	60	100	160
Nominal torque (N.m)	0.25	0.4	0.52
Peak torque at start-stop (N.m)	0.5	0.9	1.35
Maximum of average load torque (N.m)	0.38	0.53	0.84
Max intermittent torque (N.m)	0.9	1.8	2.5
Backlash (Arcses)	≤20	≤20	≤10
Maximum input speed (r/min)	10000		
Average input speed (r/min)	6500		
Inertia (1/4GD) (Kgc ²)	2.5×10 ⁻⁴		
Efficiency in nominal torque (25° C)	58%	65%	67%
Rigidity (spring constant) (×10 ⁴ N.m/rad)	0.016	0.025	0.030
Weight (g)	27		
Minimum motor power to adapt (W)	5		
Harmonic drive gearbox model	AM-20XBC-30	AM-20XBC-50	AM-20XBC-80

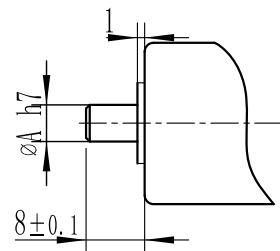
AM-20XBC example of combination



Shaft assemble data

Shaft Dia	∅3h7
Shaft length	8
With 2-M2×2GB/T73-1985 hexagon flat-end set screws	

Motor



Brushless Motor (w/E):
AM-BL20***

Recommend Encoder:
Suitable for Coreless Motor:
Encoder S: AM-EN1611S***
Encoder T: AM-EN1612T***

Coreless Motor (w/E):
AM-CL19***

Suitable for Brushless Motor
Encoder S: AM-EN1611S***
Encoder T: AM-EN1612T***

Gear Motor Length "L_T":

Gear Motor L _T	Harmonic L1	Motor L2	Encoder L3
57	17	40	-
67.7	17	40	10.7
80	17	51	12
61	17	32	12

For more motor and encoder specs, see Assun Motor website.