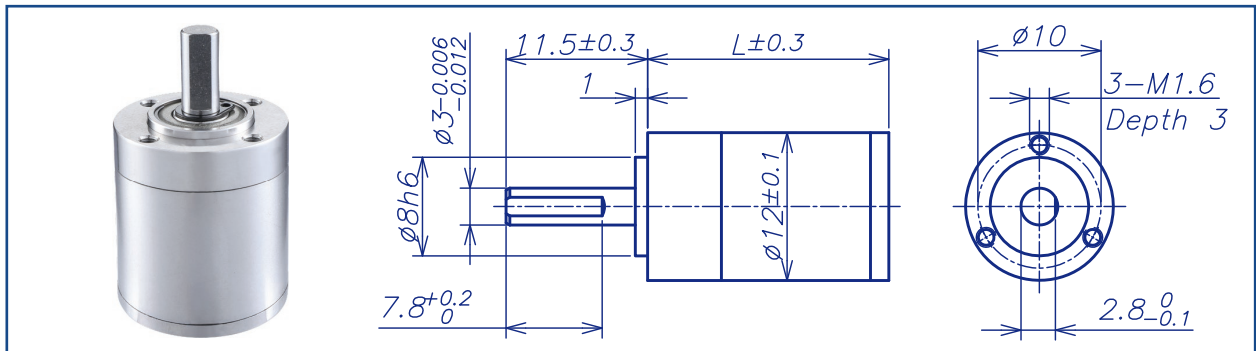


AM-12GP Series

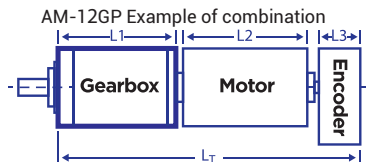


GEARBOX CHARACTER

Gear type	Straight teeth	Radial Play (6mm from flange)	max 0.1mm				
Output shaft	Stainless steel hardened	Permissible force press fits	max. 100N				
Main gear	Alloy Steel hardened	Permissible axial load (dynamic)	max. 20N				
Ring gear	Stainless steel hardened	Recommended input speed	16000RPM				
Adapter plate	Stainless steel	Operating temperature range	-40°C ~ +100°C				
Bearing AT output	Ball bearing	Operating humidity range	10-90%RH				
Axial play	0-0.1	Number of stages	1	2	3	4	5
Directions	CW/CCW	Permissible load (5mm from flange)	30N	45N	60N	60N	60N

GEARBOX DATA

Number of stage	1		2		3		4		5
Reduction ratio X:1	4	5.3	16 21	28	64 85 114	152	256 341 455 607	809	1820 1365 1024
Reduction ratio absolute	1/4	16/3	16/1 64/3	256/9	64/1 256/3 1024/9	4096/27	256/1 1024/3 4096/9 16384/27	65536/81	16384/9 4096/3 1024/1
Motor shaft max. diametre (mm)	1.5	1	1.5	1	1.5	1	1.5		1.5
Gearbox length "L" (mm)	15.4		19.6		23.8		28.0		32.2
Max. continuous torque (N.m)	0.1		0.14		0.2		0.24		0.24
Max. intermittent torque (N.m)	0.12		0.17		0.24		0.29		0.29
Average backlash no load	1.3°		1.5°		1.6°		1.6°		1.6°
Gearbox efficiency	90%		81%		73%		65%		59%
Max. mass inertia (g.cm ²)	0.01		0.01		0.009		0.009		0.009
Gearbox weight approx (g)	11		14		17		20		23
gearbox model	AM-12GPA-X		AM-12GPB-X		AM-12GPC-X		AM-12GPD-X		AM-12GPE-X



Recommend Motor:
Coreless Motor (w/E):
AM-CL10***
AM-CL12***

Brushless Motor (w/E):

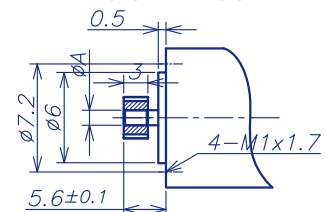
Recommend Encoder:
Suitable for Coreless Motor
Encoder S: AM-EN1008S***

Suitable for Brushless Motor
Encoder S: AM-EN1008S***
Encoder T:

INPUT GEARBOX DATA

Modulus	0.25	
Press angle	20°	
Teeth number	9	13
Max gear hole "A"	1.0	1.5
Max motor shaft	1.0	1.5
Motor dimension "D"	6	6

MOTOR DIMENSION



GEARBOX MOTOR LENGTH "LT"

Gear motor length L_T
Gear box length L_1
Motor length L_2
Encoder length L_3

Download datasheet: <https://assunmotor.com/documents-download>

Visit Our Website and Online Shop at <https://assunmotor.com> Contact: info@assunmotor.com