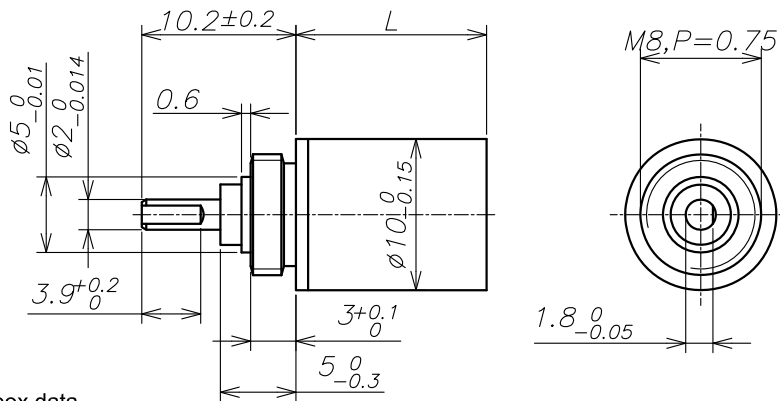


Planetary Gearbox AM-10GP Series



Gearbox data:

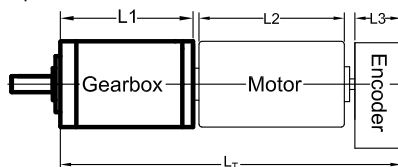
Technical Data:

- Gear Type: Straight teeth
- Output Shaft: Stainless steel hardened
- Main Gear: Alloy steel hardened
- Ring Gear: Stainless steel hardened
- Adapter plate: Stainless steel
- Bearing at output: Ball bearing
- Axial play: 0~0.3
- Directions: CW/CCW
- Radial play: (6mm from flange) max. 0.1mm
- Permissible force for press fits: max. 10 N
- Permissible axial load(dynamic): max. 5N
- Recommended input speed: 12000RPM
- Operating Temperature Range: -40 °C~+100 °C
- Operating Humidity Range: 10 ~ 90%RH
- Number of stages: 1 2 3 4 5
- Permissible radial load: (5mm from flange) 10N 10N 15N 17N 17N

Number of stage	1	2	3	4	5
Reduction ratio X:1	4	16	64	256	1024
Reduction ratio absolute	4/1	16/1	64/1	256/1	1024/1
Motor shaft max. diametre (mm)	1.5	1.5	1.5	1.5	1.5
Gearbox length "L" (mm)	6.8	10	13.2	16.4	19.6
Max. continuous torque (N · m)	0.01	0.03	0.1	0.15	0.15
Max. intermittent torque (N · m)	0.02	0.05	0.15	0.2	0.2
Average Backlash no load	1.5°	1.8°	1.9°	2.0°	2.0°
Gearbox efficiency	90%	81%	73%	65%	59%
Max. mass inertia (g.cm ²)	0.003	0.004	0.004	0.004	0.004
Gearbox weight Approx (g)	5	7	8	10	12
Gearbox model	AM-10GPA-X	AM-10GPB-X	AM-10GPC-X	AM-10GPD-X	AM-10GPE-X

"X" Stand for RATIO

AM-10GP Example of cobination



Recommend Motor:
Coreless Motor:

Coreless Motor (w/E):
AM-CL1025MAE

Brushless Motor (w/E):

Recommend Encoder:
Suitable for Coreless Motor
Encoder S:

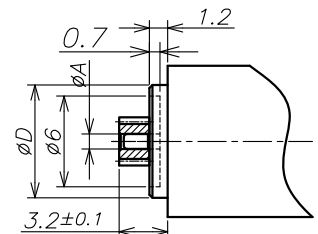
Suitable for Brushless Motor
Encoder S:

Encoder T:

Input Gear Data

Modulus	0.2
Press Angle	20°
Teeth Number	13
Max. Gear Hole "A"	1.5
Max. Motor Shaft	1.5
Motor Dimension "D"	7.46

Motor Dimension



Gear motor length "L_T":

Gear motor length L _T	Gearbox length L ₁	Motor length L ₂	Encoder length L ₃
31.8	6.6	25.2	-

For more motor and encoder specs, see Assun Motor website.

Edition: A Confirm: 龚远宽 Date: 2023-11-29